

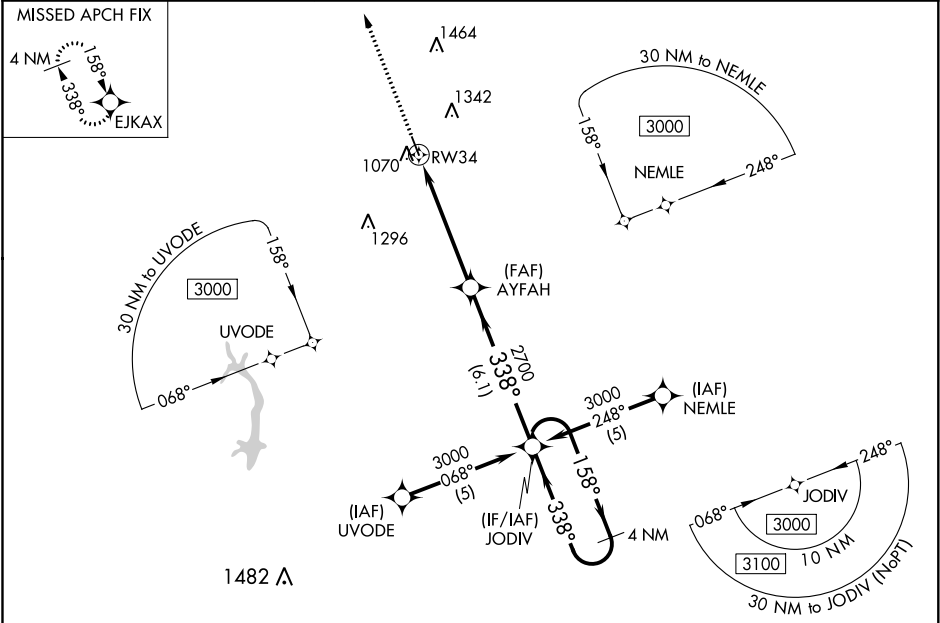
WAAS CH 86517 W34A	APP CRS 338°	Rwy Idg TDZE 1023 Apt Elev 1023
--	------------------------	---

RNAV (GPS) RWY 34
CENTERVILLE MUNI (TVK)

⚠ For uncompensated Baro-VNAV systems, LNAV/VNAV NA below -17°C (2°F) or above 46°C (114°F).
⚠ DME/DME RNP-0.3 NA. Baro-VNAV and VDP NA when using Chariton altimeter setting. When local altimeter setting not received, use Chariton altimeter setting and increase all DA 71 feet and all MDA 80 feet. Increase LPV and LNAV/VNAV all Cats visibility ¼ SM.

MISSED APPROACH: Climb to 3000 direct EJKAX and hold.

AWOS-3 123.775	CHICAGO CENTER 118.15 335.575	UNICOM 122.8 (CTAF) 0
--------------------------	---	---------------------------------



ELEV 1023 **TDZE 1023**

3000 EJKAX

*** LNAV only**

*** 0.9 NM to RW34**

RW34

AYFAH 2700

JODIV 4 NM Holding Pattern

GP 3.00° TCH 40

338° 158° 3000

0.9 NM 4.2 NM 6.1 NM

CATEGORY	A	B	C	D
LPV DA	1273-1	250 (300-1)		NA
LNAV/VNAV DA	1349-1¼	326 (400-1¼)		NA
LNAV MDA	1500-1	477 (500-1)		NA
C CIRCLING	1500-1	477 (500-1)		NA

MIRL Rwy 16-34 0

REIL Rws 16 and 34 0

34

338° to RW34

NC-3, 03 DEC 2020 to 31 DEC 2020

NC-3, 03 DEC 2020 to 31 DEC 2020