

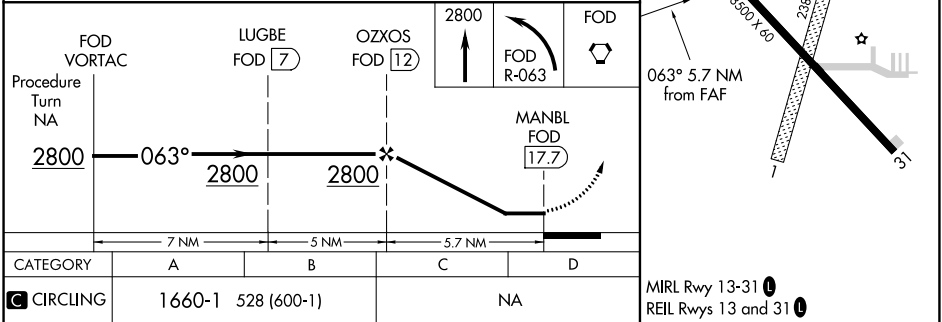
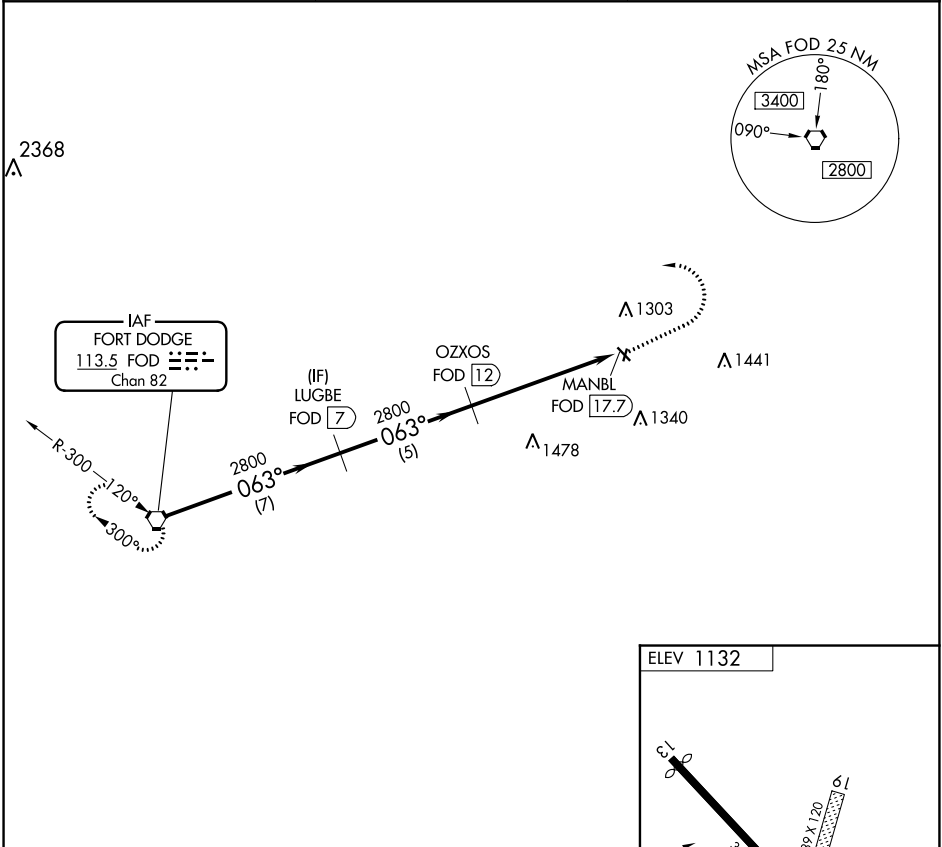
VORTAC FOD <b>113.5</b> Chan <b>82</b>	APP CRS <b>063°</b>	Rwy Idg TDZE Apt Elev <b>1132</b>	<b>N/A</b> <b>N/A</b>
--	------------------------	---	--------------------------

VOR/DME-A

EAGLE GROVE MUNI (EAG)

<div><div>V</div><div>NA</div></div>	Use Clarion altimeter setting; when not received, use Fort Dodge altimeter setting. Night Landing: Rwy 13 NA. Circling NA to Rwys 1 and 19. Helicopter visibility reduction below 1 SM NA.	MISSED APPROACH: Climb to 2800 then left turn via FOD R-063 to FOD VORTAC and hold.
--------------------------------------	--	---

CAV AWOS-3 <b>126.575</b>	MINNEAPOLIS CENTER <b>134.0 288.3</b>	UNICOM <b>122.8</b> (CTAF) <b>0</b>
------------------------------	--	--



NC-3, 03 DEC 2020 to 31 DEC 2020

NC-3, 03 DEC 2020 to 31 DEC 2020