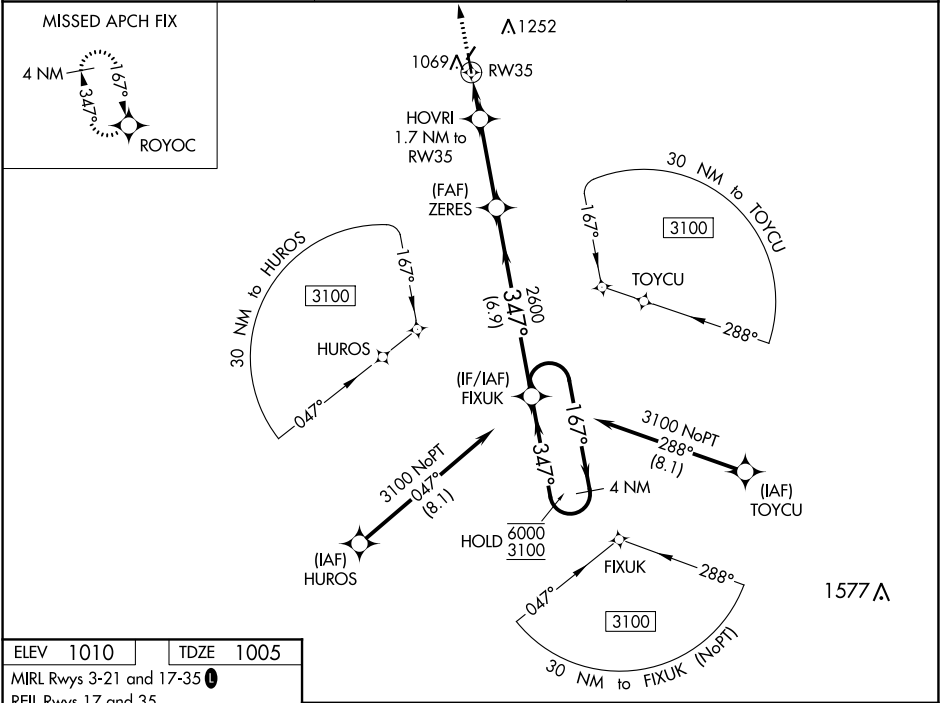


WAAS CH 77536 W35A	APP CRS 347°	Rwy Idg TDZE Apt Elev	4000 1005 1010
--	------------------------	-----------------------------	---

RNAV (GPS) RWY 35

LAMAR MUNI (LLU)

RNP APCH.		MISSED APPROACH: Climb to 3100 direct ROYOC and hold.
▼ Rwy 35 helicopter visibility reduction below ¼ SM NA. Baro-VNAV NA. ▲ NA Use Joplin altimeter setting. Circling Rwy 21 NA at night.		
JLN ASOS 120.85	KANSAS CITY CENTER 128.6 282.325	CTAF 122.9



REIL Rwy 17 and 35

Diagram of the runway layout showing RWY 35 and RWY 3. The diagram includes the runway centerline, the 347° heading to RWY 35, and the 4000 x 75 ft runway dimensions. The 35° heading is also indicated.

<div><div>3100</div><div>↑</div></div> <div><div>ROYOC</div><div>✦</div></div>	<div>ZERES</div> <div>2600</div>	<div>FIXUK</div> <div>4 NM Holding Pattern</div>	<div>167° → 6000</div> <div>← 347° 3100</div>	
<div>*LNAV only.</div> <div>HOVRI 1.7 NM to RW35</div>	<div>RW35</div> <div>1560*</div>	<div>GP 3.00°</div> <div>TCH 40</div>		
<div>1.7 NM</div> <div>3.2 NM</div> <div>6.9 NM</div>	<div>✕</div>			
CATEGORY	A	B	C	D
LPV DA	1310-1	305 (300-1)		NA
LNAV/VNAV DA	1310-1	305 (300-1)		NA
LNAV MDA	1380-1	375 (400-1)		NA
<div>CIRCLING</div>	1520-1 510 (600-1)	1620-1 610 (700-1)	1620-1¾ 610 (700-1¾)	NA