

CHEROKEE, IOWA

AL-6580 (FAA)

19059

WAAS CH 73042 W36A	APP CRS 358°	Rwy Idg 4001 TDZE 1226 Apt Elev 1226
--	------------------------	---

RNAV (GPS) RWY 36
CHEROKEE COUNTY RGNL (CKP)

RNP APCH.

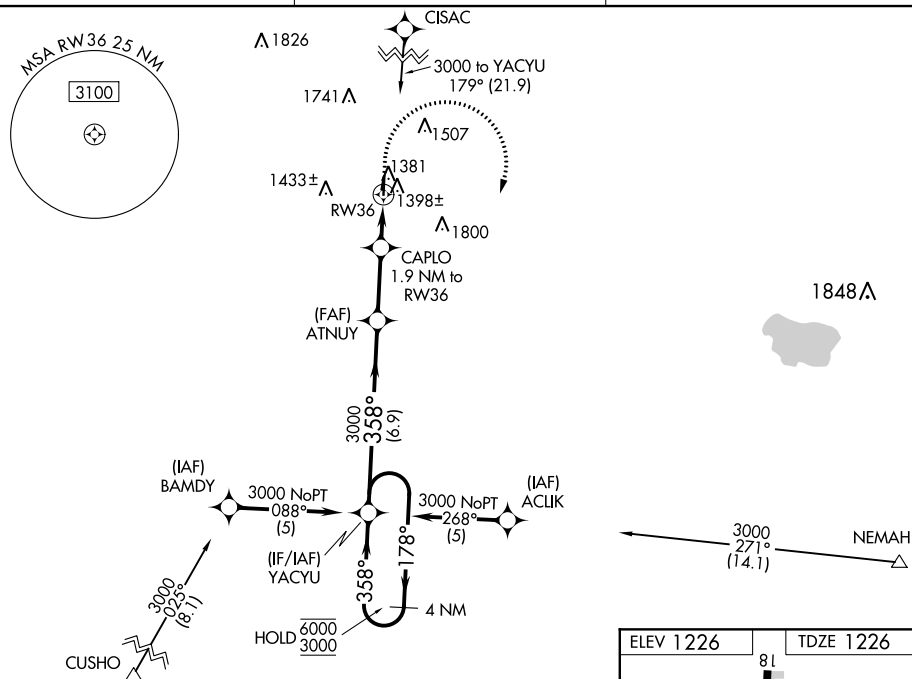

T

Rwy 36 helicopter visibility reduction below $\frac{3}{4}$ SM NA.
Circling to Rwy 1-19 NA. Circling Rwy 18 NA at night.

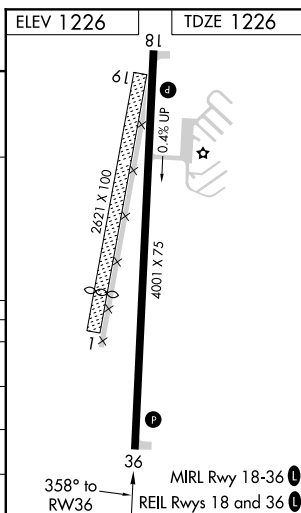
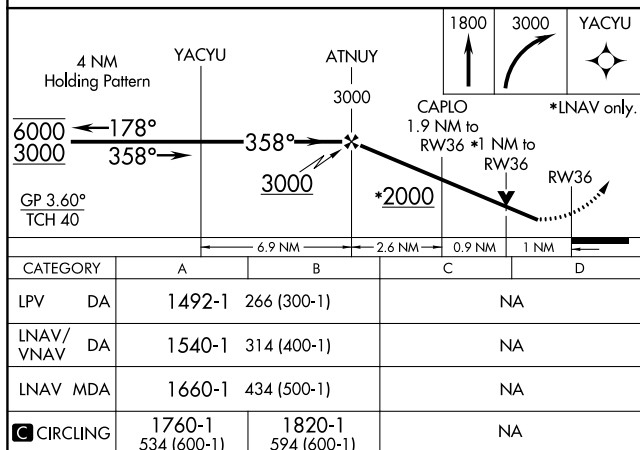
MISSED APPROACH: Climb to 1800 then climbing right turn to 3000 direct YACYU and hold.

AWOS-3
119.225

MINNEAPOLIS CENTER
125.025 235.625

UNICOM
122.8 (CTAF) 

NC-3, 03 DEC 2020 to 31 DEC 2020



CHEROKEE, IOWA
Amdt 1 28FEB19

42°44'N-95°33'W

CHEROKEE COUNTY RGNL (CKP)
RNAV (GPS) RWY 36