

APP CRS
135°

Rwy Idg
TDZE
1277

Apt Elev
1311

RNAV (GPS) RWY 13

AVA BILL MARTIN MEMORIAL (AOV)

RNP APCH.

▼

▲ NA

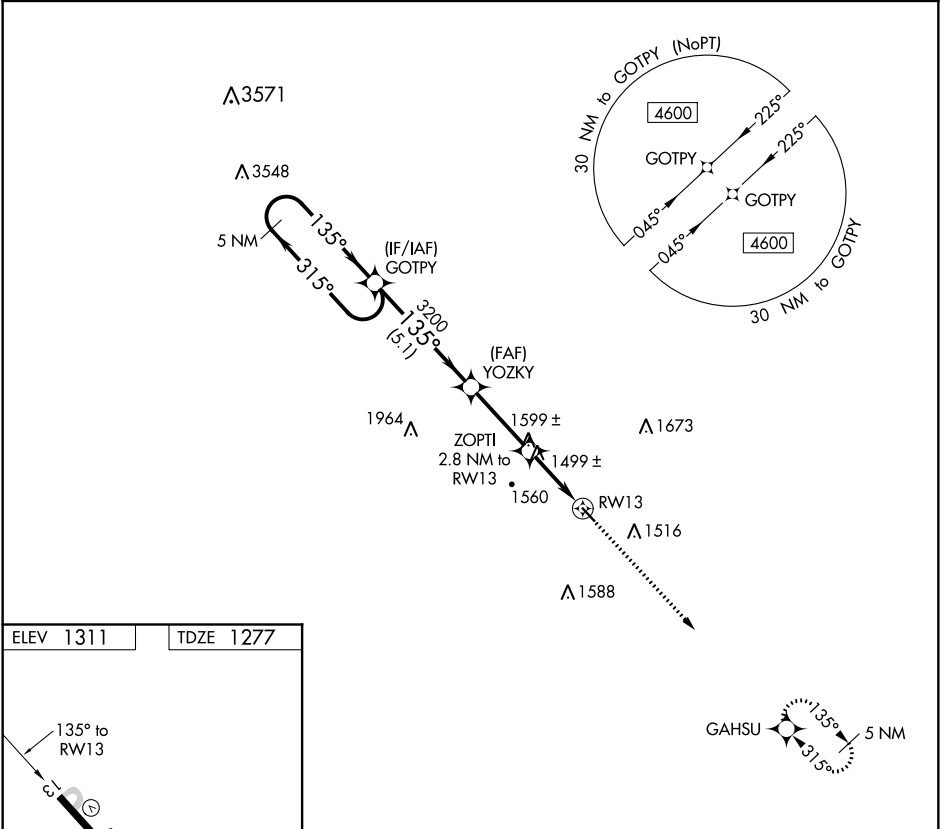
Procedure NA at night. Use Branson altimeter setting, if not received use Springfield Branson Natl altimeter setting and increase all MDA 20 feet. Rwy 13 helicopter visibility reduction below 1 SM NA.

MISSED APPROACH: Climb to 3500 direct GAHSU and hold.

BBG AWOS-3
124.625

SPRINGFIELD APP CON
126.35

UNICOM
122.7 (CTAF) 0



ELEV 1311

TDZE 1277

135° to RW13

0.9% UP

3634 X 50

5 NM Holding Pattern

GOTPY

YOZKY

ZOPTY 2.8 NM to RW13

RW13

GAHSU

VGSI and RNAV glidepath not coincident (VGSI Angle 3.00/TCH 34).

3500

GAHSU

4600

315°

135°

3200

3.00° TCH 40

2200

5.1 NM

3.1 NM

2.8 NM

CATEGORY	A	B	C	D
LNAV MDA	1840-1	563 (600-1)	NA	NA

MIRL Rwy 13-31 0