

WAAS CH 72807 W14A	APP CRS 143°	Rwy Idg TDZE Apt Elev	4600 1142 1145
--	------------------------	-----------------------------	---

RNAV (GPS) RWY 14

NORTHWEST MISSOURI RGNL (EVU)

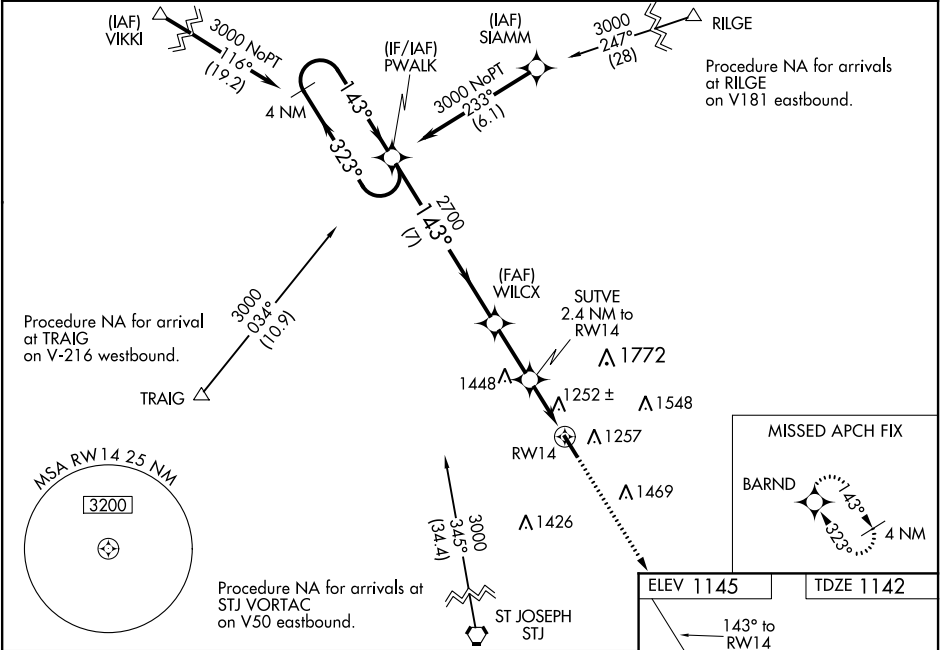
▼

▲ NA

Baro-VNAV NA when using St. Joseph altimeter setting. For uncompensated Baro-VNAV systems, LNAV/VNAV NA below -17°C (2°F) or above 54°C (130°F). DME/DME RNP-0.3 NA. Visibility reduction by helicopters NA. When local altimeter setting not received, use St. Joseph altimeter setting and increase LPV DA to 1513 feet, LNAV/VNAV DA to 1678 feet, and all MDA 140 feet, increase LPV visibility ½ mile all Cats, LNAV/VNAV visibility ½ mile all Cats and LNAV Cat C ¾ mile. Circling NA east of Rwy 14-32. When VGSI inop, Straight-in/Circling Rwy 14 procedure NA at night.

MISSED APPROACH:
Climb to 3000 direct BARND and hold.

AWOS-3PT 118.225	MINNEAPOLIS CENTER 119.6 290.4	UNICOM 122.8 (CTAF) ①
----------------------------	--	---------------------------------



4 NM Holding Pattern PWALK

VGSI and RNAV glidepath not coincident (VGSI Angle 3.00/TCH 34).

GP 3.00° TCH 40

3000

323°

143°

2700

WILCX

2700

SUTVE 2.4 NM to RW14

RW14

7 NM

2.4 NM

2.4 NM

CATEGORY

A

B

C

D

LPV DA

1392-1

250 (300-1)

NA

LN/VNAV DA

1557-1 3/8

415 (500-1 3/8)

NA

LN/VNAV MDA

1520-1

378 (400-1)

1520-1 1/8

378 (400-1 1/8)

NA

CIRCLING

1540-1

1600-1

1600-1 1/2

395 (400-1)

455 (500-1)

455 (500-1 1/2)

NA

