

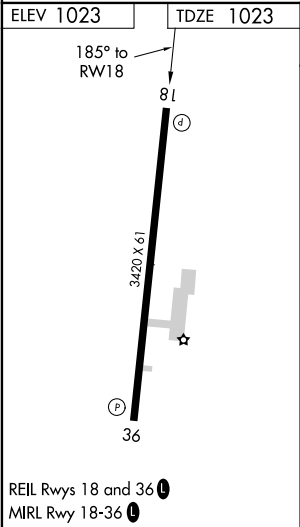
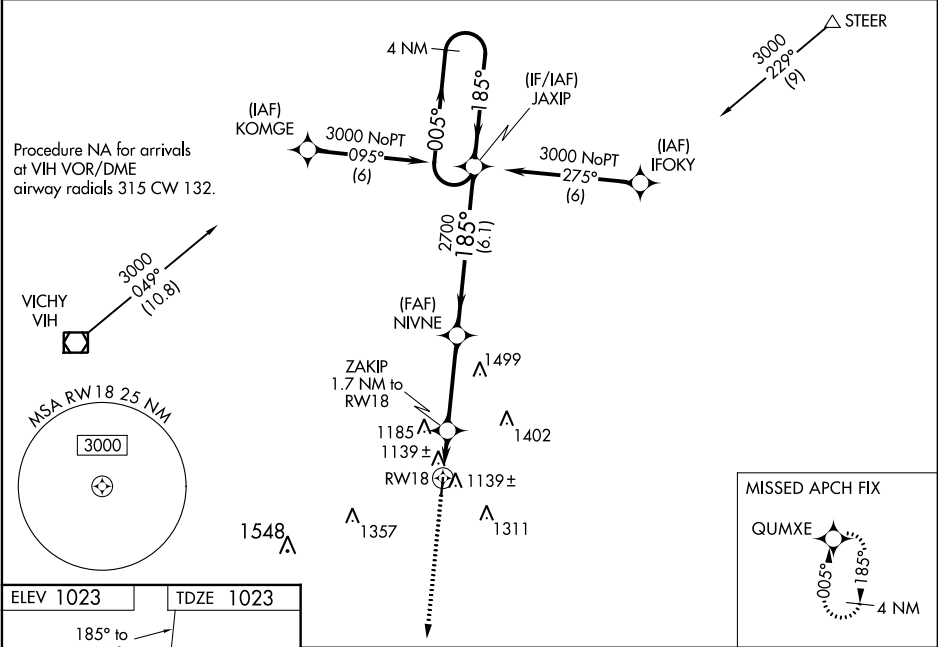
WAAS CH <b>40220</b> <b>W18A</b>	APP CRS <b>185°</b>	Rwy Idg TDZE Apt Elev	<b>3420</b> <b>1023</b> <b>1023</b>
--	------------------------	-----------------------------	---

RNAV (GPS) RWY 18

CUBA MUNI (UBX)

RNP APCH.	<div><div><div>Procedure NA for Cat B east of Rwy 18-36. Baro-VNAV NA. Use Rolla/Vichy altimeter setting; when not received, use Fort Leonard Wood altimeter setting and increase all DA 54 feet and all MDA 60 feet; increase LPV Cat A/B and LNAV/VNAV Cat A/B visibilities ¼ SM. Rwy 18 helicopter visibility reduction below ¼ SM NA. Circling Rwy 36 NA at night.</div></div></div>	MISSED APPROACH: Climb to 3000 direct QUMXE and hold.
-----------	--	---

VIH ASOS <b>119.025</b>	KANSAS CITY CENTER <b>128.35 284.675</b>	UNICOM <b>122.8 (CTAF)</b>
----------------------------	---	-------------------------------



3000	QUMXE	VGSI and RNAV glidepath not coincident. (VGSI Angle 3.00/TCH 44).			
*LNAV only		ZAKIP 1.7 NM to RW18	NIVNE	JAXIP	4 NM Holding Pattern
RW18		1600*	2700	3000	GP 3.00° TCH 40
1.7 NM		3.4 NM	6.1 NM		
CATEGORY	A	B	C	D	
LPV DA	1329-1	306 (400-1)	NA		
LNAV/VNAV DA	1357-1½	334 (400-1½)	NA		
LNAV MDA	1460-1	437 (500-1)	NA		
CIRCLING	1580-1	557 (600-1)	NA		