

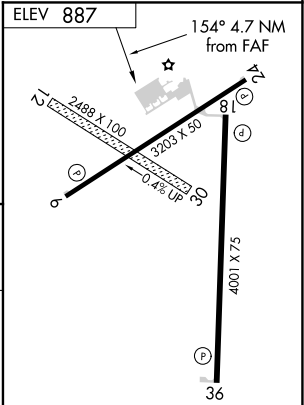
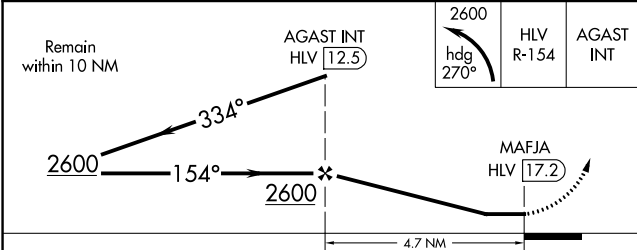
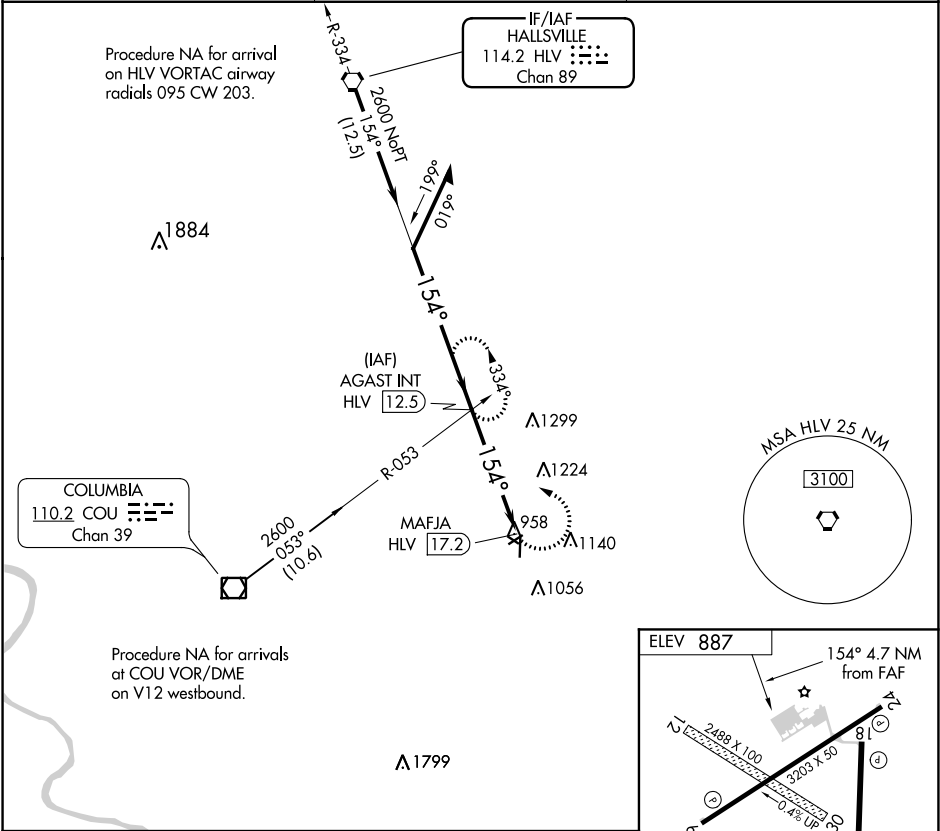
VORTAC HLV 114.2 Chan 89	APP CRS 154°	Rwy Idg TDZE Apt Elev N/A N/A 887
--	------------------------	---

VOR-A

ELTON HENSLEY MEMORIAL (F'TT)

<p>▽ Circling NA to Rwy 12 and 30. Circling Rwy 18, 24 NA at night. Use Columbia altimeter setting; when not received use Jefferson City altimeter setting and increase all MDA 80 feet, and Circling Cat C visibility ¼ SM.</p> <p>△ NA</p>	<p>MISSED APPROACH: Climbing left turn to 2600 on heading 270° and HLV VORTAC R-154 to AGAST INT/12.5 DME and hold.</p>
--	---

COU ASOS 128.45	MIZZU APP CON 124.375 353.7	UNICOM 122.7 (CTAF)
---------------------------	---------------------------------------	-------------------------------



MIRL Rwy 6-24 and 18-36 REIL Rwy 6, 18, 24 and 36				
FAF to MAP 4.7 NM				
Knots	60	90	120	150
Min:Sec	4:42	3:08	2:21	1:53

NC-3, 03 DEC 2020 to 31 DEC 2020

NC-3, 03 DEC 2020 to 31 DEC 2020