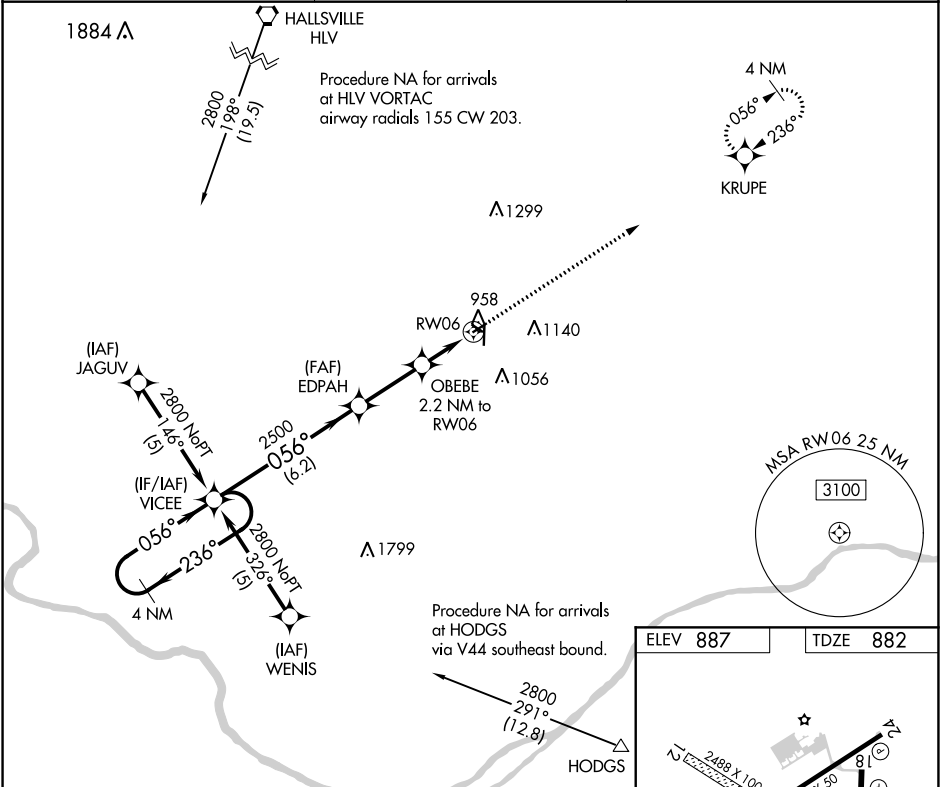


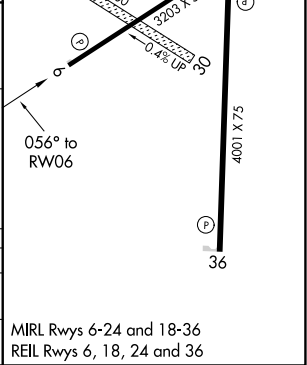
APP CRS	Rwy Idg	3203
056°	TDZE	882
	Apt Elev	887

RNAV (GPS) RWY 6
ELTON HENSLEY MEMORIAL (F'TT)

RNP APCH.		MISSED APPROACH: Climb to 2800 direct KRUPE and hold.
▼ ▲ NA Use Columbia altimeter setting; when not received, use Jefferson City altimeter setting and increase all MDA 80 feet. Rwy 6 helicopter visibility reduction below ¾ SM NA. Circling Rwy 18, 24 NA at night.		
COU ASOS 128.45	MIZZU APP CON 124.375 353.7	UNICOM 122.7 (CTAF)



4 NM Holding Pattern		VGSI and descent angles not coincident (VGSI Angle 3.00/TCH 46).		2800	KRUPE
VICEE		EDPAH		OBEBE 2.2 NM to RWY 6	
2800 ← 236°		056° →		1620	
6.2 NM		2.7 NM		2.2 NM	
CATEGORY	A	B	C	D	
RNAV MDA	1300-1	418 (500-1)	1300-1¼ 418 (500-1¼)	NA	
CIRCLING	1380-1 493 (500-1)	1480-1 593 (600-1)	1560-2 673 (700-2)	NA	



NC-3, 03 DEC 2020 to 31 DEC 2020

NC-3, 03 DEC 2020 to 31 DEC 2020