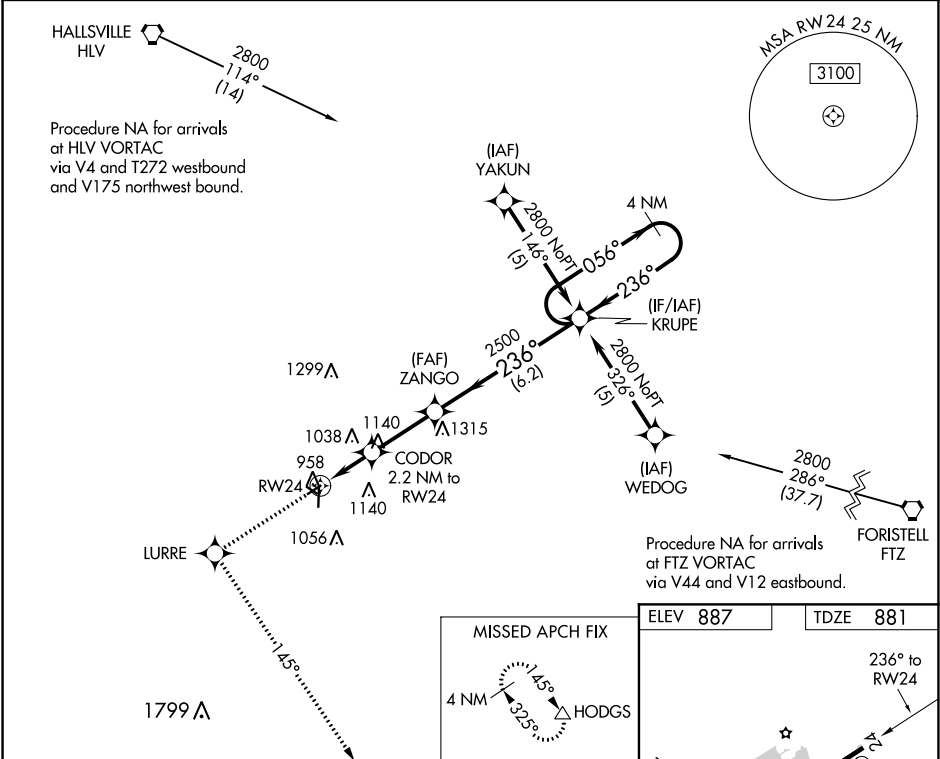


APP CRS	Rwy Idg	3203
236°	TDZE	881
	Apt Elev	887

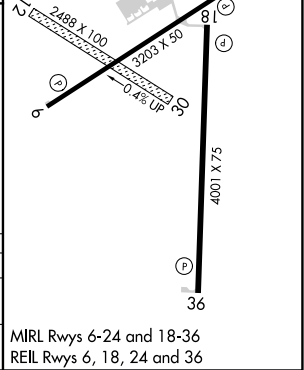
RNAV (GPS) RWY 24
ELTON HENSLEY MEMORIAL (F'TT')

RNP APCH.	Use Columbia altimeter setting; when not received, use Jefferson City altimeter setting and increase all MDA 80 feet, and increase LNAV Cat C visibility ¼ mile. Rwy 24 helicopter visibility reduction below 1 SM NA. Circling NA to Rws 12 and 30. Straight-in Rwy 24 NA at night, Circling Rwy 18, 24 NA at night.	MISSED APPROACH: Climb to 2800 direct LURRE and left turn via 145° track to HODGS and hold.
-----------	---	---

COU ASOS 128.45	MIZZU APP CON 124.375 353.7	UNICOM 122.7 (CTAF)
--------------------	--------------------------------	------------------------



2800	LURRE	HODGS	VGSI and descent angles not coincident (VGSI Angles 4.00/TCH 61).	
↑	✱	△	KRUPE 4 NM Holding Pattern	
145° tr			CODOR 2.2 NM to RW24	
			ZANGO	
			RW24	
			1620	
			2500	
			056°	
			236°	
			2800	
			2.2 NM	
			2.7 NM	
			6.2 NM	
CATEGORY	A	B	C	D
LNAV MDA	1320-1	439 (500-1)	1320-1¼ 439 (500-1¼)	NA
CIRCLING	1380-1 493 (500-1)	1480-1 593 (600-1)	1560-2 673 (700-2)	NA



NC-3, 03 DEC 2020 to 31 DEC 2020

NC-3, 03 DEC 2020 to 31 DEC 2020