

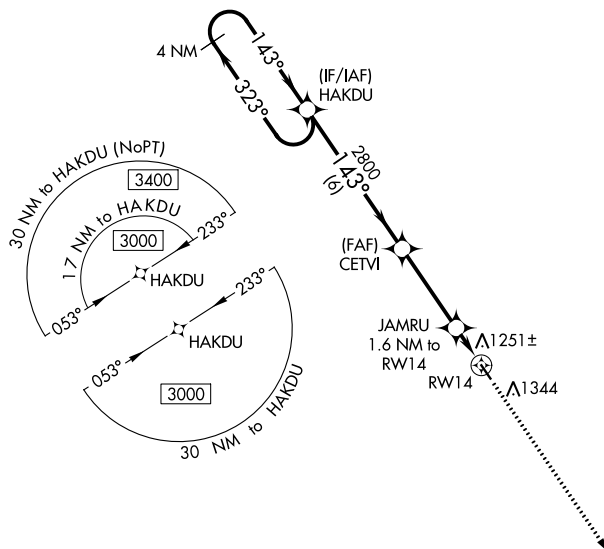
WAAS CH 45837 W14A	APP CRS 143°	Rwy Idg 3455 TDZE 1155 Apt Elev 1157
--	------------------------	---

RNAV (GPS) RWY 14
CLARION MUNI (CAV)

T For uncompensated Baro-VNAV systems, LNAV/VNAV NA below -17°C (2°F) or above 54°C (130°F). DME/DME RNP-0.3 NA. When local altimeter setting not received, use Fort Dodge altimeter setting and increase all DA 52 feet, all MDA 60 feet; increase LPV and LNAV/VNAV all Cats visibility 1/8 mile. Baro-VNAV and VDP NA when using Fort Dodge altimeter setting. Helicopter visibility reduction below 3/4 SM NA.

MISSED APPROACH: Climb to 3000 direct FEGNU and hold.

AWOS-3 126.575	MINNEAPOLIS CENTER 134.0 288.3	UNICOM 122.8 (CTAF) 0
--------------------------	--	---------------------------------

 $1787 \pm \Delta$

ELEV 1157		TDZE 1155
-----------	--	-----------

