

WAAS
CH **45816**
W18A

APP CRS
184°

Rwy Idg **4000**
TDZE **752**
Apt Elev **754**

RNAV (GPS) RWY 18
WASHINGTON MUNI (A WG)

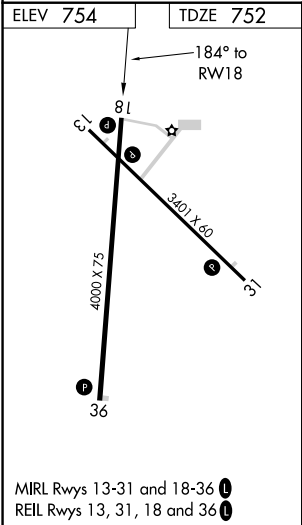
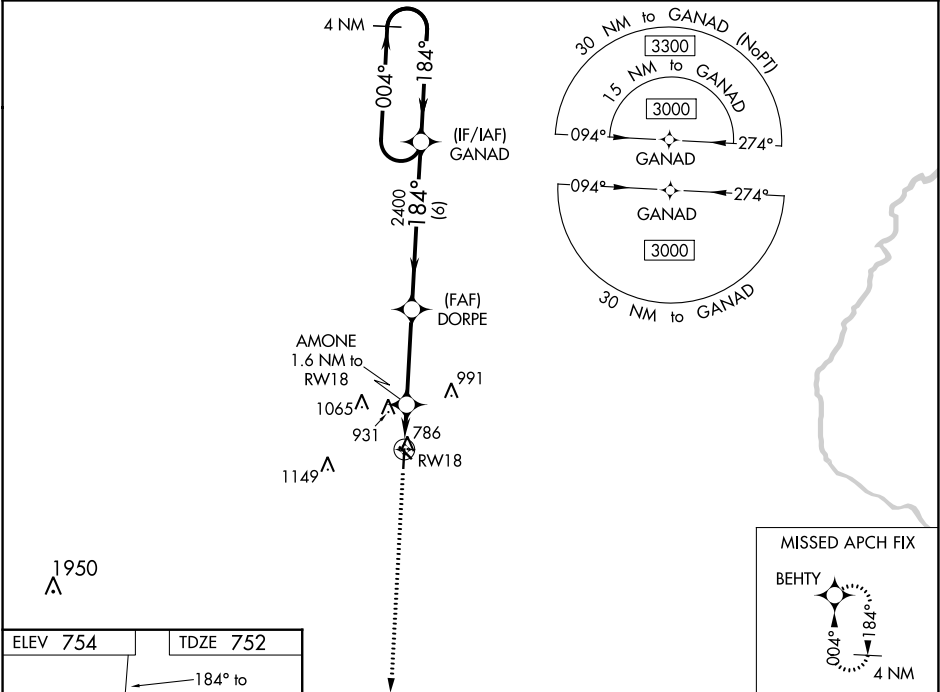
RNP APCH.

▼ For uncompensated Baro-VNAV systems, LNAV/VNAV NA below -6°C (22°F) or above 54°C (130°F).

▲ Baro-VNAV NA when using Iowa City altimeter setting. When local altimeter setting not received, use Iowa City altimeter setting: increase LPV DA to 1064 feet, LNAV/VNAV DA to 1116 feet; increase all MDA's 80 feet and visibility LNAV and Circling Cat C ¼ SM.

MISSED APPROACH:
Climb to 3000 direct
BEHTY and hold.

AWOS-3 127.825	CHICAGO CENTER 135.6 370.95	UNICOM 122.7 (CTAF) 0
--------------------------	---------------------------------------	---------------------------------



3000	BEHTY	VGSI and RNAV glidepath not coincident (VGSI Angle 3.00/TCH 20).	
*LNAV only.	AMONE 1.6 NM to RWY 18	DORPE 2400	GANAD 2400
	1.6 NM	3.4 NM	6 NM
CATEGORY	A	B	C
LPV DA	1002-1	250 (300-1)	NA
LNAV/VNAV DA	1054-1	302 (300-1)	NA
LNAV MDA	1160-1	408 (500-1)	1160-1½ 408 (500-1½)
CIRCLING	1200-1 446 (500-1)	1260-1 506 (600-1)	1500-2¼ 746 (800-2¼)