

APP CRS  
**002°**

Rwy Idg **3196**  
TDZE **313**  
Apt Elev **313**

**RNAV (GPS) RWY 36**  
MISSISSIPPI COUNTY (CHQ)

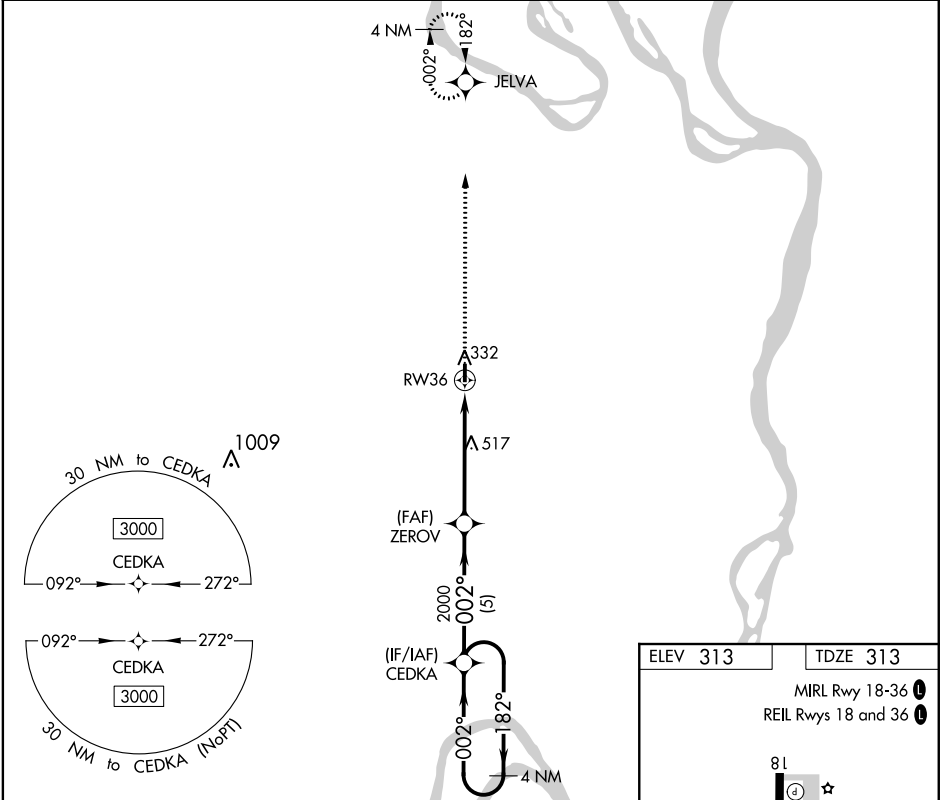
NA

NA

DME/DME RNP-0.3 NA. Procedure NA at night. Use Sikeston altimeter setting, when not received use Cairo, IL altimeter setting and increase all MDA 20 feet. Helicopter visibility reduction below 1 SM NA.

MISSED APPROACH: Climb to 3000 direct JELVA and hold.

SIK AWOS-3 <b>119.175</b>	MEMPHIS CENTER <b>133.65 292.15</b>	CTAF <b>122.9</b>
------------------------------	--	----------------------



4 NM Holding Pattern

3000

182°

002°

002°

2000

3.00° TCH 45

5 NM

5.2 NM

RW36

VGSI and descent angle not coincident (VGSI Angle 3.00/TCH 40).

3000

JELVA

ZEROV

3196 X 60

81

36

002° to RW36

CATEGORY	A	B	C	D
LNAV MDA	800-1	487 (500-1)	NA	NA
CIRCLING	800-1 487 (500-1)	860-1 547 (600-1)	NA	NA