

WAAS CH 87032 W04A	APP CRS 044°	Rwy Idg TDZE Apt Elev	4001 821 823
--	------------------------	-----------------------------	---

RNAV (GPS) RWY 4

CLINTON RGNL (GLY)

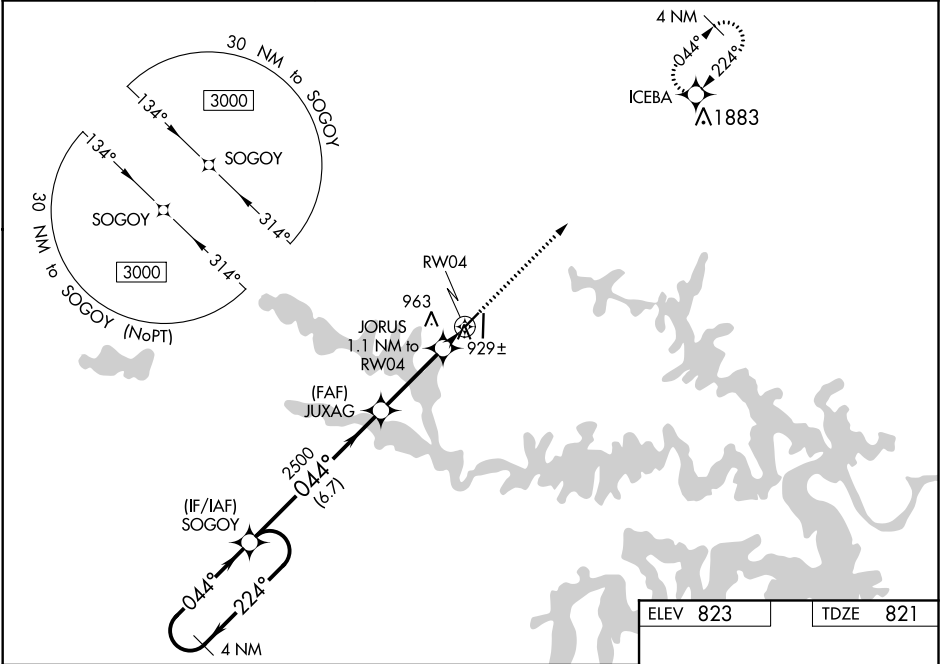
RNP APCH.

⚠

For uncompensated Baro-VNAV systems, LNAV/VNAV NA below -16°C or above 54°C. When local altimeter setting not received, use Whiteman AFB altimeter setting and increase all DA 61 feet and all MDA 80 feet; increase LNAV-VNAV all Cats and LNAV Cat C visibility ¼ mile. Baro-VNAV NA when using Whiteman AFB altimeter setting. Straight-in Rwy 4 NA at night, Circling Rwy 4 NA at night. Rwy 4 helicopter visibility reduction below 1 SM NA.

MISSED APPROACH:
Climb to 3000 direct ICEBA and hold.

AWOS-3 120.475	WHITEMAN APP CON ★ 127.45	UNICOM 122.8 (CTAF) 0
--------------------------	-------------------------------------	---------------------------------



VGSI and RNAV glidepath not coincident (VGSI Angle 3.50/TCH 39).				
4 NM Holding Pattern				
3000 ← 224° 044° →				
GP 3.60° TCH 58				
SOGOY				
JUXAG				
JORUS 1.1 NM to RW04				
RW04				
*1280				
6.7 NM 3.1 NM 1.1 NM				
CATEGORY	A	B	C	D
LPV DA	1121-1	300 (300-1)		NA
LNAV/VNAV DA	1206-1½	385 (400-1½)		NA
LNAV MDA	1180-1	359 (400-1)		NA
CIRCLING	1280-1 457 (500-1)	1300-1 477 (500-1)	1340-1½ 517 (600-1½)	NA

ELEV 823 TDZE 821

3000 ICEBA

*LNAV only.

4001 X 50

5000 X 75

81

36

044° to RW04

881

MIRL Rwy 4-22 and 18-36

REIL Rwy 4, 18, 22 and 36