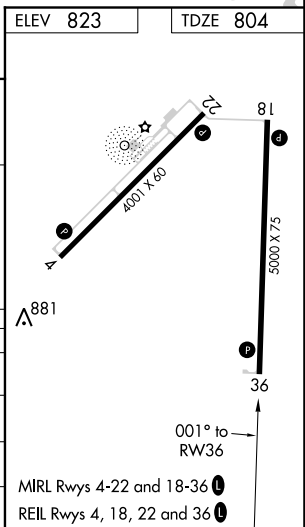
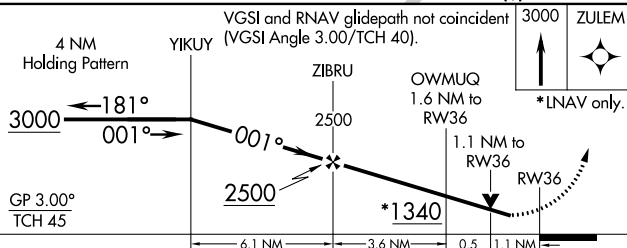
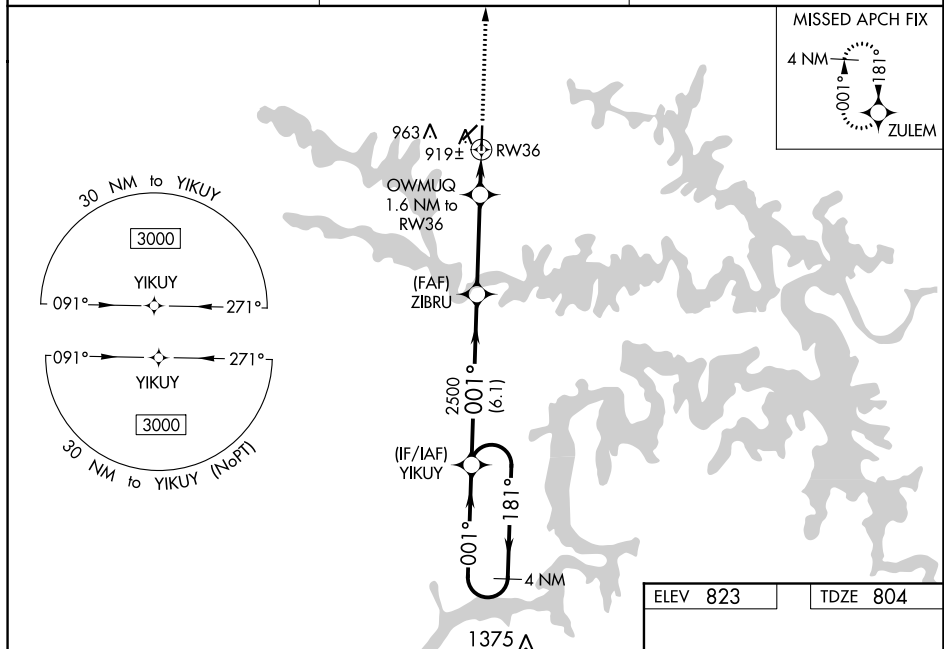
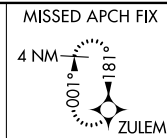
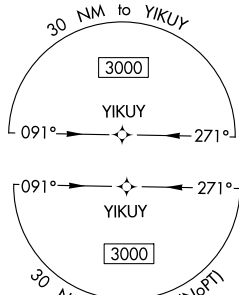



RNAV (GPS) RWY 36  
CLINTON RGNL (GLY)

**T** Baro-VNAV NA when using Whiteman AFB altimeter setting. For uncompensated Baro-VNAV systems, LNAV/VNAV NA below -16°C or above 54°C. Circling Rwy 4 NA at night. When local altimeter setting not received, use Whiteman AFB altimeter setting and increase all DA 61 feet and all MDA 80 feet, increase visibility LNAV Cats C/D  $\frac{3}{4}$  mile, LNAV/VNAV all Cats and Circling Cat D  $\frac{1}{4}$  mile. VDP NA with Whiteman AFB altimeter setting.

**MISSED APPROACH.**  
Climb to 3000 direct  
ZULEM and hold.

UNICOM  
122.8 (CTAF) 

CATEGORY		A	B	C	D
LPV	DA	1054-1 250 (300-1)			
RNAV/ VNAV	DA	1101-1 297 (300-1)			
RNAV	MDA	1260-1 456 (500-1)	1260-1 $\frac{3}{8}$ 456 (500-1 $\frac{3}{8}$ )		
 CIRCLING		1280-1 457 (500-1)	1300-1 477 (500-1)	1340-1 $\frac{1}{2}$ 517 (600-1 $\frac{1}{2}$ )	1480-2 657 (700-2)

NC-3, 03 DEC 2020 to 31 DEC 2020