

WAAS CH <b>48805</b> <b>W36A</b>	APP CRS <b>001°</b>	Rwy Idg TDZE <b>997</b> Apt Elev <b>1004</b>
--	------------------------	--

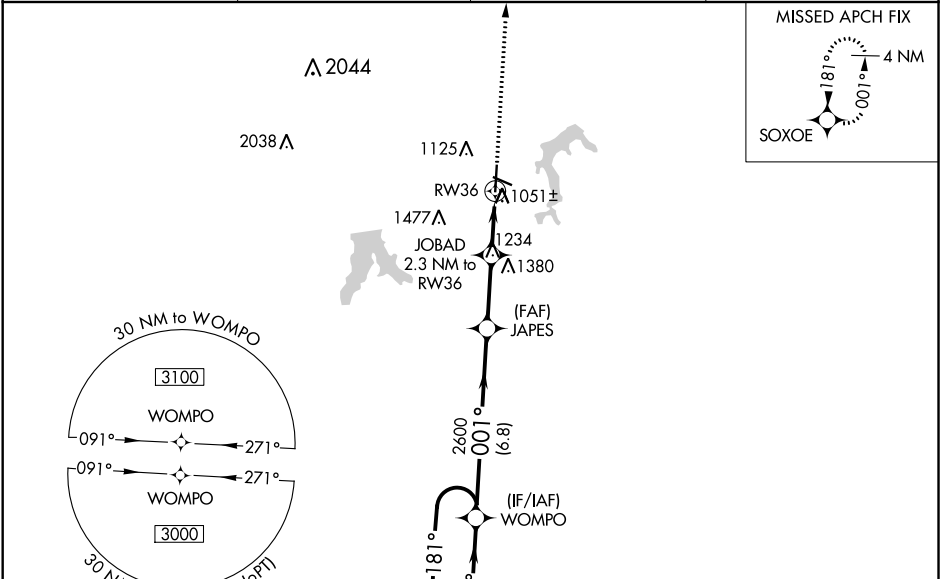
RNAV (GPS) RWY 36

LEE'S SUMMIT MUNI (LXT)

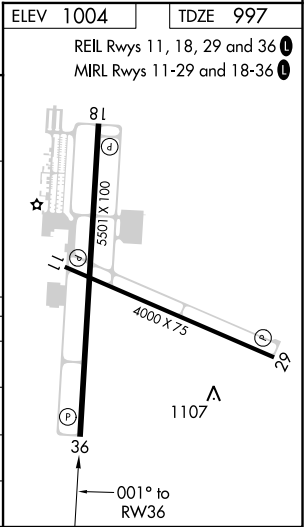
**⚠** For uncompensated Baro-VNAV systems, LNAV/VNAV NA below -17°C (2°F) or above 54°C (130°F). Rwy 36 helicopter visibility reduction below ¾ SM NA. DME/DME RNP-0.3 NA. VDP and Baro-VNAV NA when using Charles B. Wheeler Downtown altimeter setting. When local altimeter setting not received, use Charles B. Wheeler Downtown altimeter setting: increase LPV DA to 1374 feet and all visibilities ½ SM; increase LNAV/VNAV to 1367 feet and all visibilities ½ SM; increase all MDA 80 feet and LNAV visibility Cats C and D ½ SM, Circling Cats C and D ¼ SM.

MISSED APPROACH: Climb to 3000 direct SOXOE and hold.

ASOS <b>124.175</b>	KANSAS CITY APP CON <b>118.4 307.35</b>	CLNC DEL <b>118.45</b>	UNICOM <b>122.8</b> (CTAF) <b>0</b>
------------------------	--	---------------------------	--



4 NM Holding Pattern		WOMPO		JAPES		JOBAD 2.3 NM to RW36		RW36	
3000		181°		001°		001°		2600	
GP 3.00°		TCH 45		2600		*1760		*1.6 NM to RW36	
CATEGORY		A		B		C		D	
LPV DA		1306-7/8		309 (400-7/8)					
LNAV/VNAV DA		1299-7/8		302 (300-7/8)					
LNAV MDA		1540-1 543 (600-1)		1540-1 5/8 543 (600-1 1/8)					
CIRCLING		1540-1 536 (600-1)		1780-2 1/4 776 (800-2 1/4)		1780-2 1/2 776 (800-2 1/2)			



NC-3, 03 DEC 2020 to 31 DEC 2020

NC-3, 03 DEC 2020 to 31 DEC 2020