

WAAS CH 99416 W02A	APP CRS 020°	Rwy Idg TDZE Apt Elev	5000 991 996
--	------------------------	-----------------------------	---

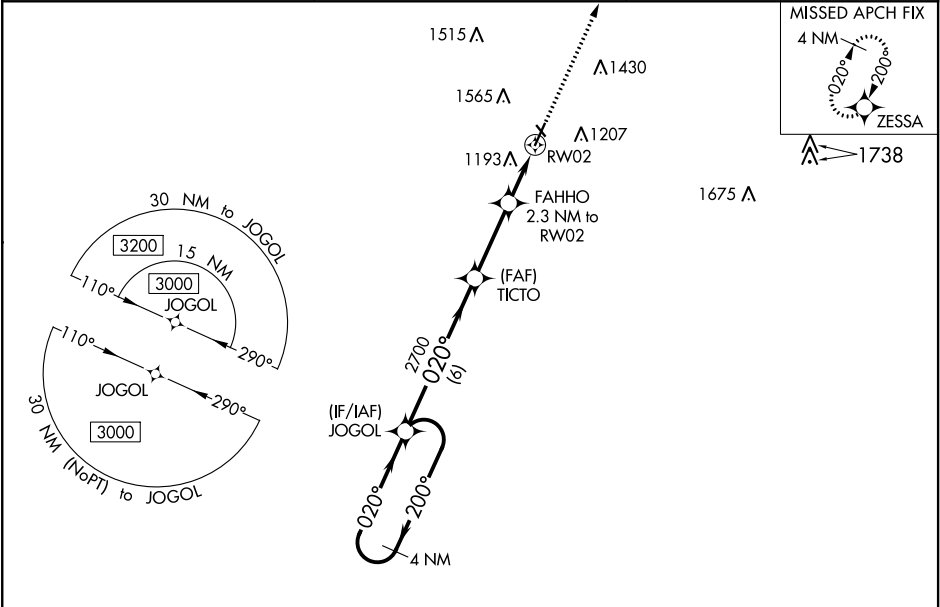
RNAV (GPS) RWY 2
SCHENCK FIELD (ICL)

RNP APCH.

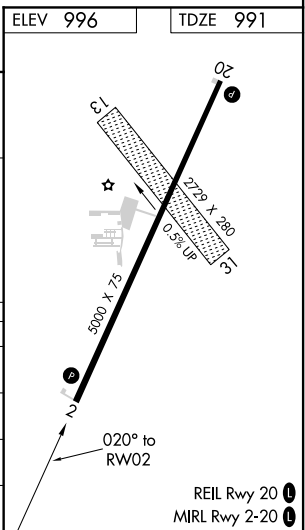
- V** For uncompensated Baro-VNAV systems, LNAV/VNAV NA below -16°C (4°F) or above 54°C (130°F).

A Circling NA west of Rwy 2-20. Circling NA to Rwys 13 and 31.
Rwy 2 helicopter visibility reduction below 3/4 SM NA.
- MISSED APPROACH:
Climb to 3000 direct
ZESSA and hold.

AWOS-3 132.025	MINNEAPOLIS CENTER 119.6 290.4	UNICOM 122.8 (CTAF)
--------------------------	--	-------------------------------



4 NM Holding Pattern		JOGOL		VGSI and descent angles not coincident (VGSI Angle 3.00/TCH 28).		3000 ZESSA	
3000 ← 200° 020° →		020°		2700		*1760	
GP 3.00° TCH 40		6 NM		2.9 NM		0.9 NM	
						1.4 NM	
						1.4 NM to RWY02	
						RWY02	
						*LNAV only	
CATEGORY		A		B		C	
LPV DA		1241-1		250 (300-1)			
LNAV/VNAV DA		1489-1 ³ / ₈		498 (500-1 ³ / ₈)			
LNAV MDA		1460-1 469 (500-1)		1460-1 ³ / ₈ 469 (500-1 ³ / ₈)			
CIRCLING		1500-1 504 (600-1)		1780-2 ¹ / ₄ 784 (800-2 ¹ / ₄)		1780-2 ¹ / ₂ 784 (800-2 ¹ / ₂)	



NC-3, 03 DEC 2020 to 31 DEC 2020

NC-3, 03 DEC 2020 to 31 DEC 2020