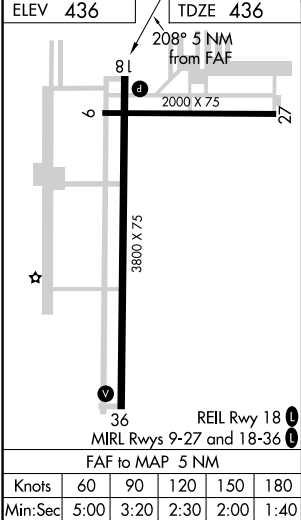
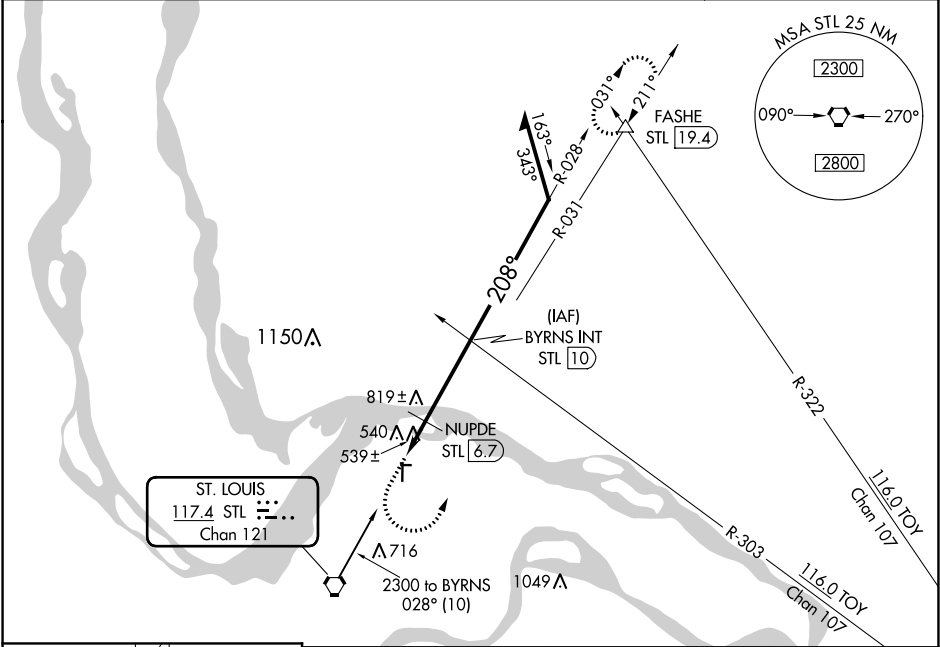


VORTAC STL	APP CRS	Rwy Idg	3800
117.4	208°	TDZE	436
Chan 121		Apt Elev	436

VOR RWY 18
ST CHARLES COUNTY SMARTT (S'E/T)

▼ If local altimeter setting not received, use St Louis Lambert Intl altimeter setting and increase all MDAs 60 feet. Straight-in minimums NA with St Louis Lambert Intl altimeter setting.	MISSED APPROACH: Climb to 1000 then climbing left turn to 2700 via heading 360° and STL R-031 to FASHE INT/19.4 DME and hold.
---	---

ASOS 118.075	ST. LOUIS APP CON 124.2 353.9	CLNC DEL 121.6	UNICOM 122.7 (CTAF) 0
-----------------	----------------------------------	-------------------	--------------------------



ELEV 436	TDZE 436	1000	2700	STL R-031	FASHE	BYRNS INT STL 10	Remain within 10 NM
VGSI and descent angles not coincident (VGSI Angle 3.00/TCH 43).							
NUPDE STL 6.7							
STL 5							
3.77° TCH 43							
1160*							
2300							
*1220 when using St Louis Lambert Intl altimeter setting.							
CATEGORY	A	B	C	D			
S-18	1160-1	724 (800-1)	1160-2	724 (800-2)	NA		
CIRCLING	1160-1	724 (800-1)	1160-2	724 (800-2)	NA		
NUPDE FIX MINIMUMS							
S-18	800-1 364 (400-1)				NA		
CIRCLING	840-1	900-1	900-1½	404 (500-1)	464 (500-1)	464 (500-1½)	NA