

APP CRS  
323°

Rwy Idg  
TDZE  
Apt Elev

3641  
1286  
1288

RNAV (GPS) RWY 32

AUDUBON COUNTY (ADU)

RNP APCH.

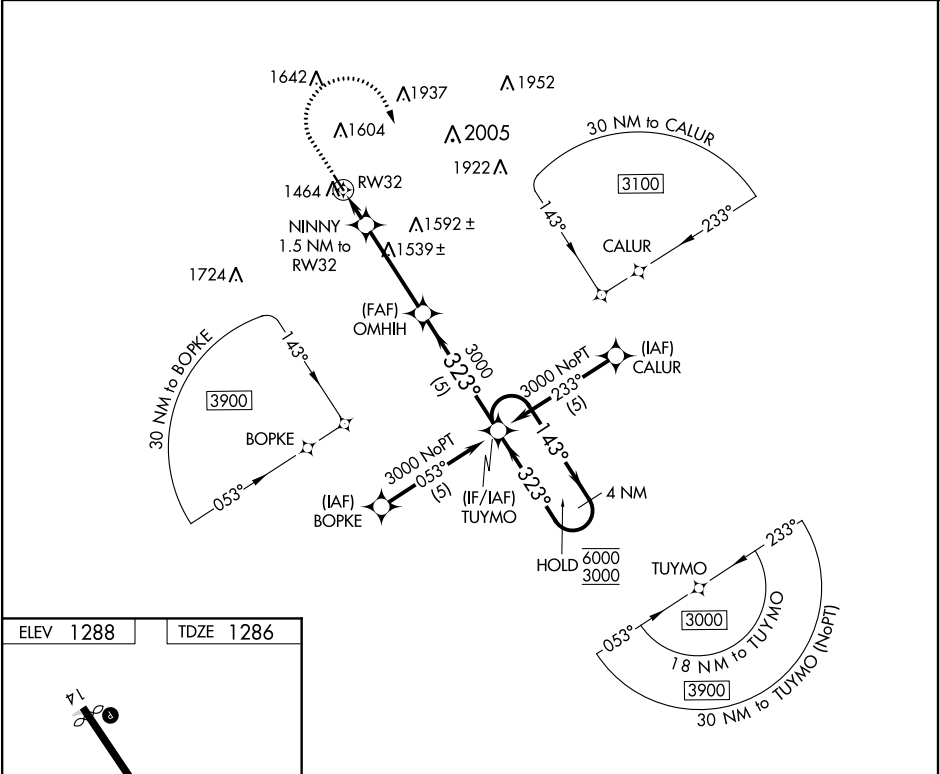
▼

▲

Circling Rwy 14 NA at night.  
Rwy 32 helicopter visibility reduction below ¾ SM NA.  
When local altimeter setting not received, procedure NA.

MISSED APPROACH: Climb to 2500 then climbing right turn to 3000 direct TUYMO and hold.

AWOS-3 118.075	MINNEAPOLIS CENTER 119.6 290.4	UNICOM 122.8 (CTAF) ①
-------------------	-----------------------------------	--------------------------



ELEV 1288

TDZE 1286

2500

3000

TUYMO

VGSI and descent angles not coincident (VGSI Angle 3.25/TCH 40).

OMHIH

TUYMO

4 NM Holding Pattern

NINNY 1.5 NM to RW32

323°

1800

1.5 NM

3.8 NM

5 NM

CATEGORY	A	B	C	D
LNAV MDA	1760-1	474 (500-1)	NA	
CIRCLING	1900-1 612 (700-1)	1920-1 632 (700-1)	NA	