

APP CRS	Rwy Idg	5000
359°	TDZE	1321
	Apt Elev	1321

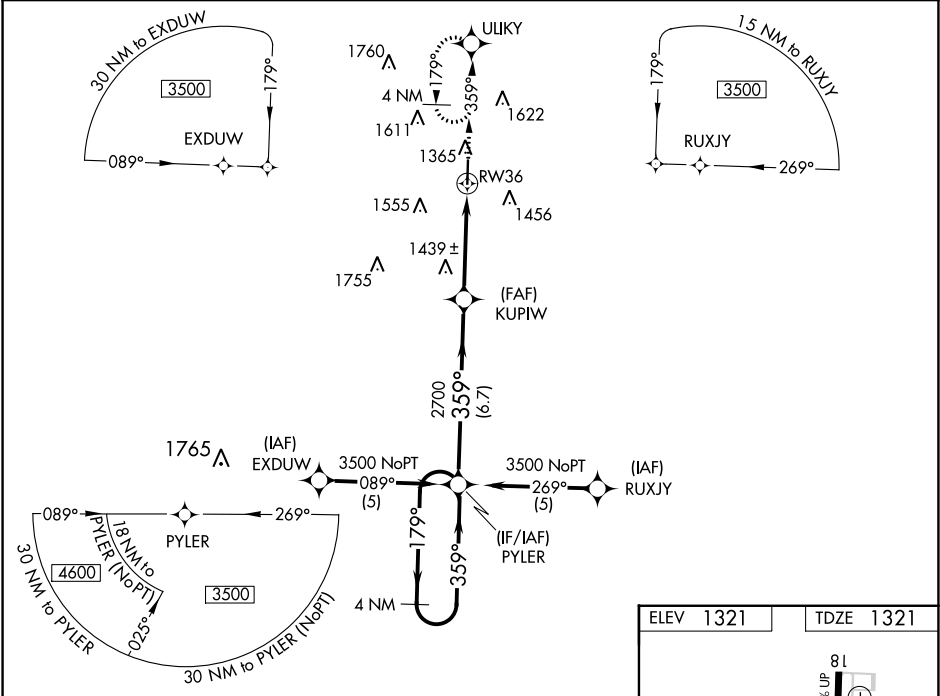
RNAV (GPS) RWY 36
FLOYD W JONES LEBANON (LBO)

▼ When local altimeter setting not received, use Springfield-Branson National altimeter setting and increase all DA/MDA 120 feet.

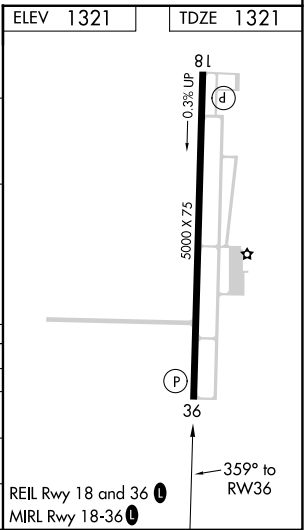
▲ NA Baro-VNAV NA when using Springfield-Branson National altimeter setting. Baro-VNAV NA below -17° C (1° F). DME/DME RNP-0.3 NA.

MISSED APPROACH: Climb to 3500 direct ULIKY and hold.

AWOS-3PT 118.975	SPRINGFIELD APP CON 121.1 290.5	CLNC DEL 123.725	UNICOM 122.8 (CTAF) 0
---------------------	------------------------------------	---------------------	---------------------------------



4 NM Holding Pattern		*LNAV only, VDP NA when using Springfield-Branson National altimeter setting.		3500	ULIKY
PYLER		KUPIW		*1.1 NM to RW36	
3500 ← 179°		3500 → 359°		RW36	
GP 3.00° TCH 47		2700		6.7 NM	
CATEGORY		A		B	
GLS PA DA		NA		C	
LNAV/VNAV DA		1680-1¼ 359 (400-1¼)		D	
LNAV MDA		1700-1 379 (400-1)		1700-1¼ 379 (400-1¼)	
CIRCLING		1820-1 499 (500-1)		1820-1½ 499 (500-1½)	
				1980-2 659 (700-2)	



NC-3, 03 DEC 2020 to 31 DEC 2020

NC-3, 03 DEC 2020 to 31 DEC 2020