

APP CRS
179°

Rwy Idg
TDZE
Apt Elev

5000
1316
1321

RNAV (GPS) RWY 18

FLOYD W JONES LEBANON (LBO)

▼

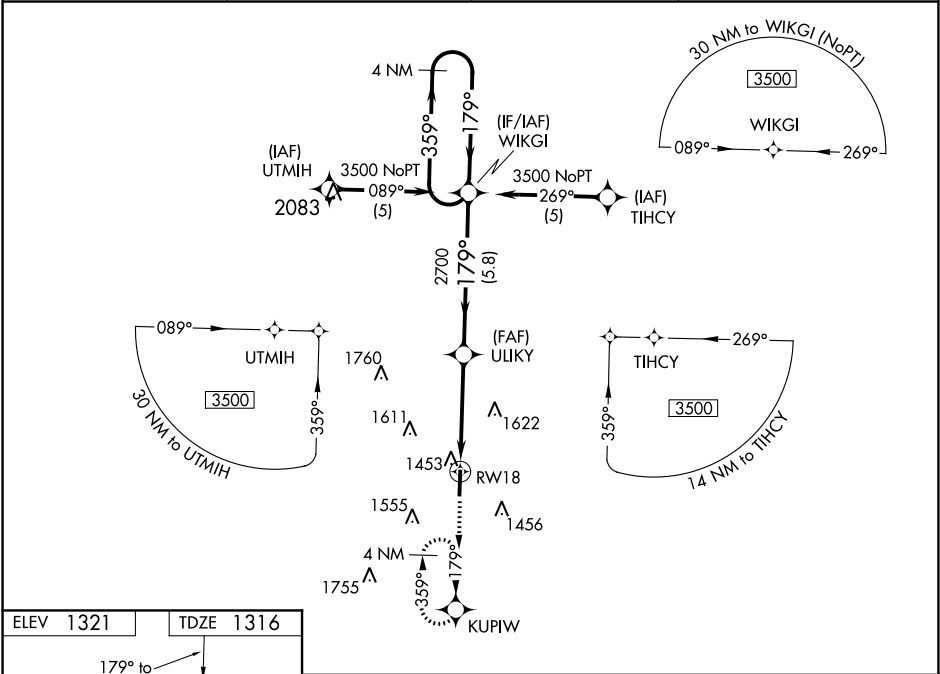
When local altimeter setting not received, use Springfield-Branson National altimeter setting and increase all DA/MDA 120 feet.

▲NA

Baro-VNAV NA when using Springfield-Branson National altimeter setting.
Baro-VNAV NA below -17° C (1° F). DME/DME RNP-0.3 NA.

MISSED APPROACH: Climb to 3500 direct KUPIW and hold.

AWOS-3PT 118.975	SPRINGFIELD APP CON 121.1 290.5	CLNC DEL 123.725	UNICOM 122.8 (CTAF) 0
---------------------	------------------------------------	---------------------	--------------------------



REIL Rwy 18 and 36

MIRL Rwy 18-36

179° to RWY 18

81

0.3% UP

5000 X 75

36

3500

KUPIW

VGSI and descent angles not coincident.

* LNAV only, VDP NA when using Springfield-Branson National altimeter setting.

4 NM Holding Pattern

WIKGI

ULIKY

2700

359°

179°

3500

GP 3.00° TCH 40

1.3

2.9 NM

5.8 NM

CATEGORY	A	B	C	D
GLS PA DA	NA			
LNAV/VNAV DA	1937-2¼ 621 (700-2¼)			
LNAV MDA	1760-1 444 (500-1)		1760-1¼ 444 (500-1¼)	
CIRCLING	1820-1 499 (500-1)		1820-1½ 1980-2 499 (500-1½) 659 (700-2)	