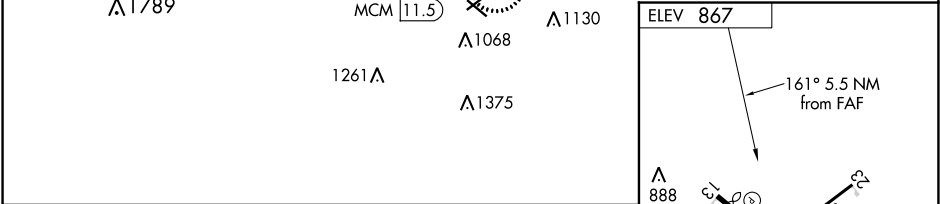
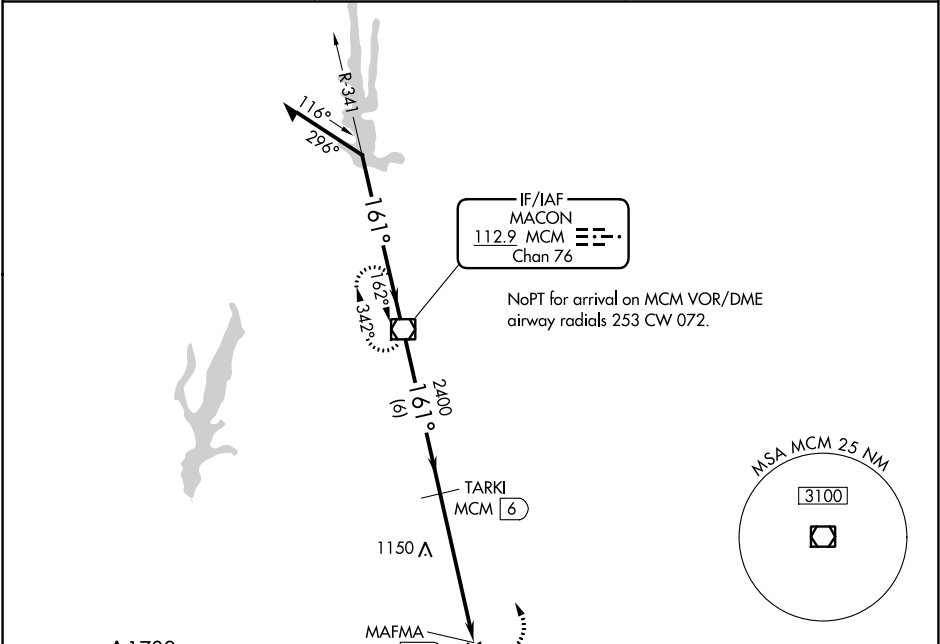


VOR/DME MCM <b>112.9</b> Chan <b>76</b>	APP CRS <b>161°</b>	Rwy Idg TDZE Apt Elev	<b>N/A</b> <b>N/A</b> <b>867</b>	VOR/DME-A OMAR N BRADLEY (MBY)
---	------------------------	-----------------------------	--	-----------------------------------

<div><div>▼</div><div>▲ NA</div></div> <div>Circling to Rwy 5 NA at night. When local altimeter setting not received, use Columbia altimeter setting and increase all MDA 100 feet and visibility Cat C ¼ mile. Visibility reduction by helicopters NA.</div>	MISSED APPROACH: Climbing left turn to 2600 direct MCM VOR/DME and hold.
---	--

AWOS-3P <b>120.025</b>	KANSAS CITY CENTER <b>125.25 235.975</b>	UNICOM <b>122.7</b> (CTAF) <b>0</b>
---------------------------	---	--



Remain within 10 NM	MCM VOR/DME	TARKI MCM 6	MAFMA MCM 11.5	2600 MCM
2400	161°	2400	161°	
	6 NM	5.5 NM		
CATEGORY	A	B	C	D
CIRCLING	1420-1	553 (600-1)	1480-1¾ 613 (700-1¾)	NA

REIL Rwy 13 and 31 0

MIRL Rwy 5-23 and 13-31 0

NC-3, 03 DEC 2020 to 31 DEC 2020

NC-3, 03 DEC 2020 to 31 DEC 2020