

WAAS  
CH **61321**  
**W31A**

APP CRS  
**309°**

Rwy Idg  
TDZE **867**  
Apt Elev **867**

**RNAV (GPS) RWY 31**  
OMAR N BRADLEY (MBY)

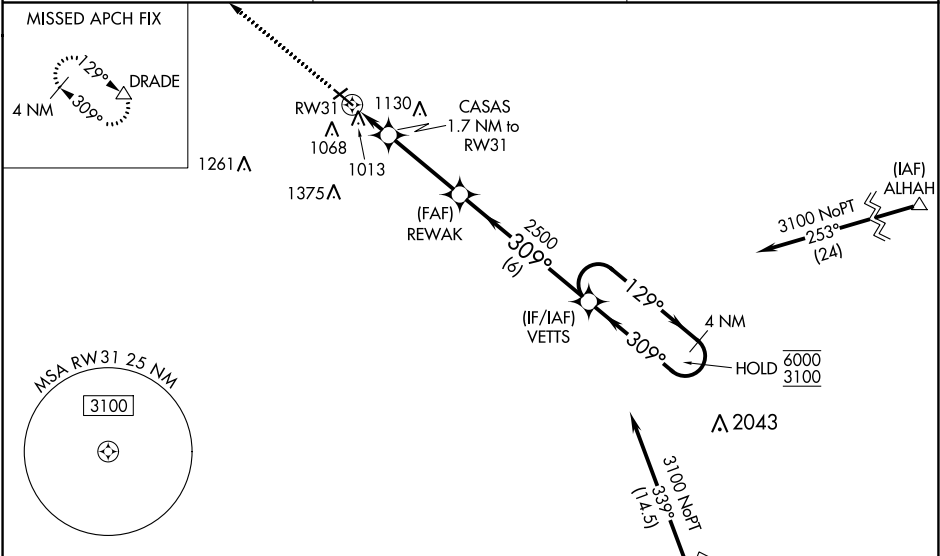
RNP APCH.

NA

Circling to Rwy 5, 23 NA at night. Rwy 31 helicopter visibility reduction below ¾ SM NA. Baro-VNAV NA when using Columbia altimeter setting. For uncompensated Baro-VNAV systems, LNAV/VNAV NA below -16°C or above 54°C. VDP NA when using Columbia altimeter setting. When local altimeter setting not received, use Columbia altimeter setting: increase LPV DA to 1212 feet and all visibilities ½ SM; increase LNAV/VNAV DA to 1278 feet and all visibilities ¼ SM; increase all MDA 100 feet and visibility Cat C ¼ SM.

MISSED APPROACH:  
Climb to 2900 direct  
DRADE and hold.

AWOS-3P <b>120.025</b>	KANSAS CITY CENTER <b>125.25 235.975</b>	UNICOM <b>122.7 (CTAF) 0</b>
---------------------------	---	---------------------------------



ELEV **867**      TDZE **867**

Procedure NA for arrival on HLV VORTAC  
airway radials 270 CW 036.

2900 DRADE

CATEGORY	A	B	C	D
LPV DA	1117-7/8 250 (300-7/8)			NA
LNAV/VNAV DA	1183-7/8 316 (400-7/8)			NA
LNAV MDA	1280-1	413 (500-1)	1280-1 1/8 413 (500-1 1/8)	NA
CIRCLING	1420-1	553 (600-1)	1480-1 3/4 613 (700-1 3/4)	NA

MOBERLY, MISSOURI

Orig-B 15AUG19

39°28'N-92°26'W

OMAR N BRADLEY (MBY)  
**RNAV (GPS) RWY 31**