

WAAS CH <b>77719</b> <b>W20A</b>	APP CRS <b>205°</b>	Rwy Idg <b>5000</b> TDZE <b>884</b> Apt Elev <b>892</b>
--	------------------------	---

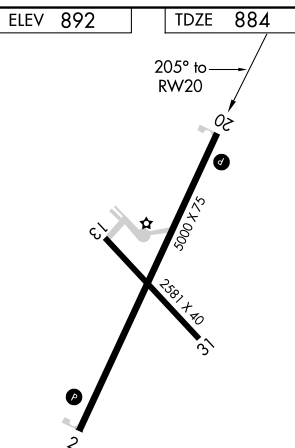
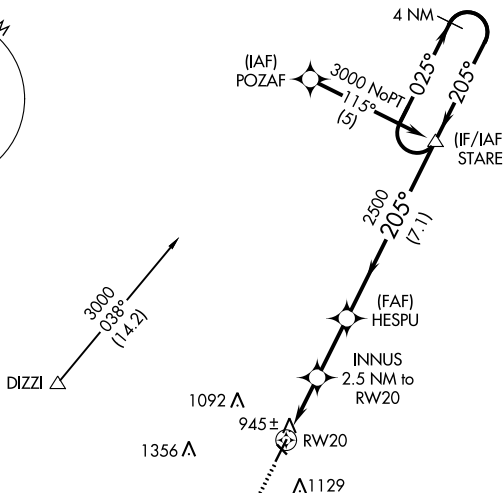
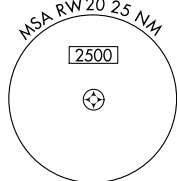
RNAV (GPS) RWY 20  
NEVADA MUNI (NVD)

**▼** DME/DME RNP-0.3 NA. Rwy 20 helicopter visibility reduction below  $\frac{3}{4}$  SM NA.  
**▲** NA Baro-VNAV and VDP NA when using Joplin Rgnl altimeter setting. For uncompensated Baro-VNAV systems, LNAV/VNAV NA below -16°C (4°F) or above 54°C (130°F). When local altimeter setting not received, use Joplin Rgnl altimeter setting and increase all DA 112 feet and all MDA 120 feet, increase LPV and LNAV/VNAV all Cws visibility  $\frac{1}{4}$  mile and increase LNAV Cat C visibility  $\frac{1}{4}$  mile. Circling NA to Rwy 13-31.

MISSED APPROACH: Climb to 3000  
direct KIFGE and hold.

AWOS-3  
119.175

KANSAS CITY CENTER  
125.55 327.0

UNICOM  
122.8 (CTAF) 

MIRL Rwy 2-20 **L**  
REIL Rwys 2 and 20 **L**

NEVADA, MISSOURI  
Orig-A 29MAR18

37°51'N-94°18'W

NEVADA MUNI (NVD)

## RNAV (GPS) RWY 20