

WAAS CH 50420 W30A	APP CRS 297°	Rwy Idg TDZE Apt Elev	3428 939 940
--	------------------------	-----------------------------	---

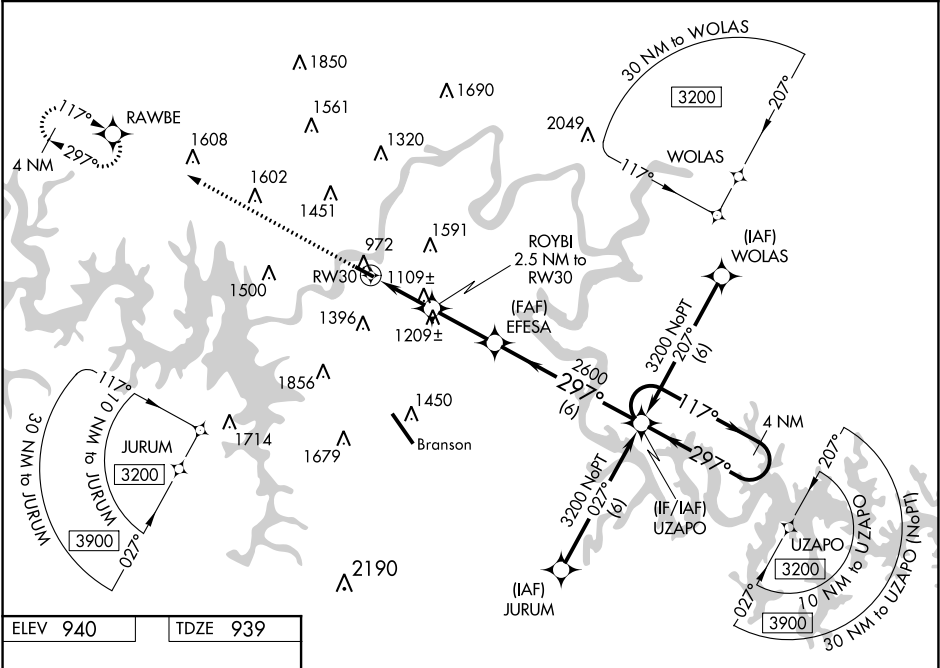
RNAV (GPS) RWY 30

M GRAHAM CLARK DOWNTOWN (PLK)

⚠ Baro-VNAV NA when using Branson altimeter setting. For uncompensated Baro-VNAV systems, LNAV/VNAV NA below -16°C (4°F) or above 54°C (130°F). DME/DME RNP-0.3 NA. VDP NA with KBBG altimeter setting. Obtain local altimeter setting on CTAF; when not received, use Branson altimeter setting and increase all DA 65 feet and all MDA 80 feet; increase LPV and LNAV/VNAV all Cats visibility ¼ mile.

MISSED APPROACH:
Climb to 3200 direct
RAWBE and hold.

SPRINGFIELD APP CON 126.35	UNICOM 122.7 (CTAF) 0
--------------------------------------	---------------------------------



ELEV 940	TDZE 939
----------	----------

3200

↑

RAWBE

⬠

*LNAV only

ROYBI 2.5 NM to RW30

EFESA 2600

UZAPO

117°

297°

3200

GP 3.00°

TCH 52

3738 X 100

297° to RW30

CATEGORY	A	B	C	D
LPV DA	1189-¾	250 (300-¾)		NA
LNAV/VNAV DA	1224-⅞	285 (300-⅞)		NA
LNAV MDA	1360-1	421 (500-1)		NA
CIRCLING	1560-1	620 (700-1)		NA