




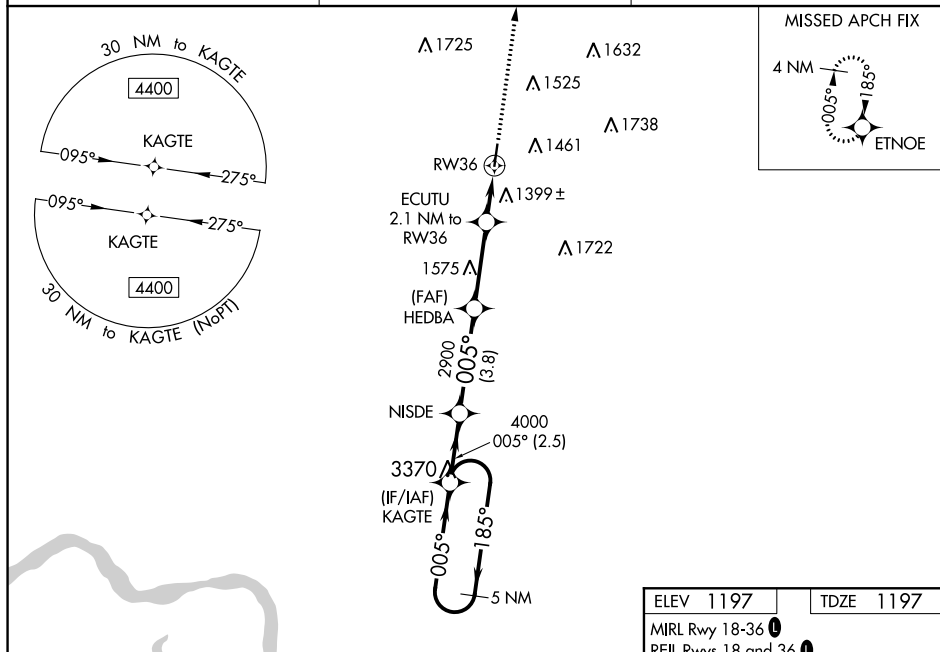
WAAS CH 42516 W36A	APP CRS 005°	Rwy Idg 4305 TDZE 1197 Apt Elev 1197
--	------------------------	---

RNAV (GPS) RWY 36
LE MARS MUNI (L.R.J.)

   -24°C	<p>Baro-VNAV NA when using Orange City altimeter setting. For uncompensated Baro-VNAV systems, LNAV/VNAV NA below -17°C (2°F) or above 54°C (130°F). DME/DEN RNP-0.3 NA. When local altimeter setting not received, use Orange City altimeter setting and increase LPV DA to 1510 feet, LNAV/VNAV DA to 1786 feet and LPV and LNAV/VNAV all Cats visibility 1/8 mile; increase all MDA 80 feet and LNAV Cat C and Circling Cat C visibility 1/4 mile. Helicopter visibility reduction below 1 SM NA.</p>
--	--

MISSED APPROACH:
Climb to 4000 direct
ETNOE and hold.

AWOS-3P 120.975	SIOUX CITY APP CON ★ 124.6 307.0	UNICOM 122.8 (CTAF) 0
---------------------------	--	--



5 NM Holding Pattern

KAGTE

NISDE

HEDBA

ECUTU 2.1 NM to RW36

RW36

GP 3.00° TCH 40

4000

185°

005°

005°

4000

2900

2900

1900

2.5 NM

3.8 NM

3.1 NM

2.1 NM

VGS and RNAV glidepath not coincident (VGS Angle 3.00/TCH 29).

4000

ETNOE

*RNAV only

CATEGORY	A	B	C	D
LPV DA	1469-1	272 (300-1)		NA
RNAV/VNAV DA	1723-1 $\frac{7}{8}$	526 (600-1 $\frac{7}{8}$)		NA
RNAV MDA	1660-1	463 (500-1)	1660-1 $\frac{3}{8}$ 463 (500-1 $\frac{3}{8}$)	NA
CIRCLING	1760-1 563 (600-1)	1820-1 623 (700-1)	1820-1 $\frac{3}{4}$ 623 (700-1 $\frac{3}{4}$)	NA

