

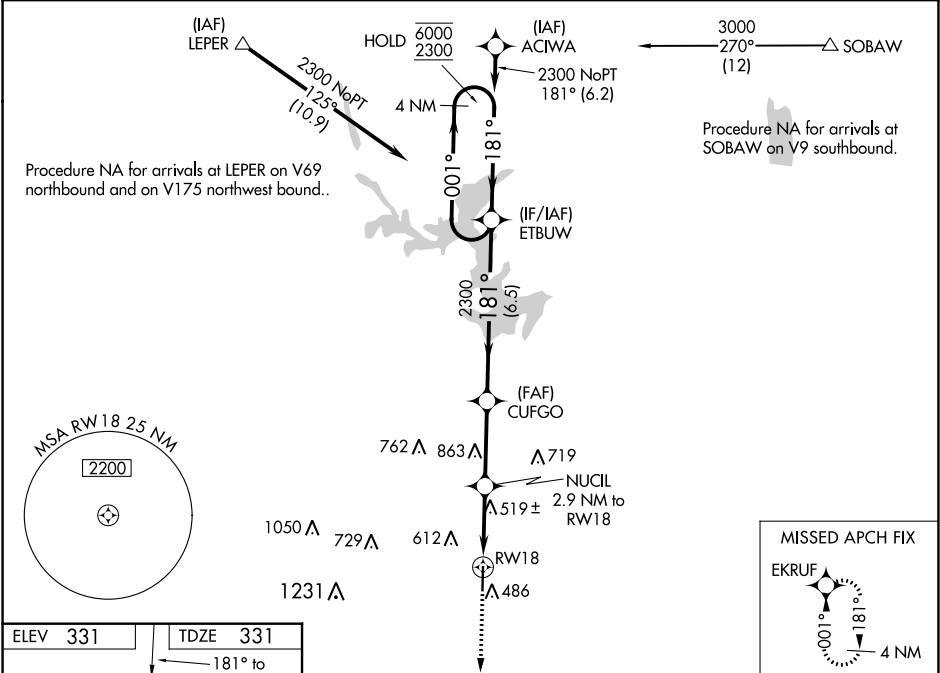
WAAS CH 97499 W18A	APP CRS 181°	Rwy Idg 5008 TDZE 331 Apt Elev 331
--	------------------------	---

RNAV (GPS) RWY 18

POPLAR BLUFF RGNL BUSINESS (POB)

RNP APCH.	MISSED APPROACH: Climb to 2300 direct EKRUF and hold.
-----------	---

ASOS 124.225	MEMPHIS CENTER 120.075 289.4	UNICOM 123.0 (CTAF) 0
------------------------	--	---------------------------------



ELEV 331	TDZE 331
81 181° to RW18	2300 EKRUF VGS1 and RNAV glidepath not coincident (VGS1 Angle 3.00/TCH 30).
5008 X 100	NUCIL 2.9 NM to RW18
36	CUFGO
MIRL Rwy 18-36	ETBUW 4 NM Holding Pattern
REIL Rwy 18 and 36	GP 3.05° TCH 40
	1300*
	2.9 NM 3.1 NM 6.5 NM
CATEGORY	A B C D
LPV DA	634-1 303 (400-1)
LNAV/VNAV DA	675-1 ¼ 344 (400-1 ¼)
LNAV MDA	800-1 469 (500-1) 800-1 ¾ 469 (500-1 ¾) 800-1 ½ 469 (500-1 ½)
CIRCLING	840-1 509 (600-1) 920-1 589 (600-1) 920-1 ½ 589 (600-1 ½) 980-2 649 (700-2)

NC-3, 03 DEC 2020 to 31 DEC 2020

NC-3, 03 DEC 2020 to 31 DEC 2020