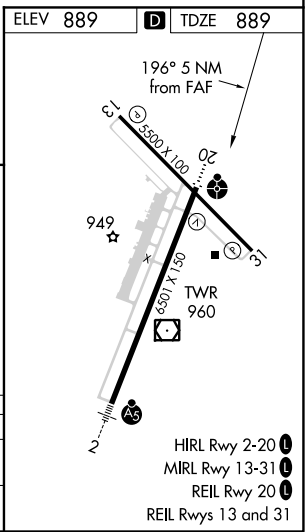
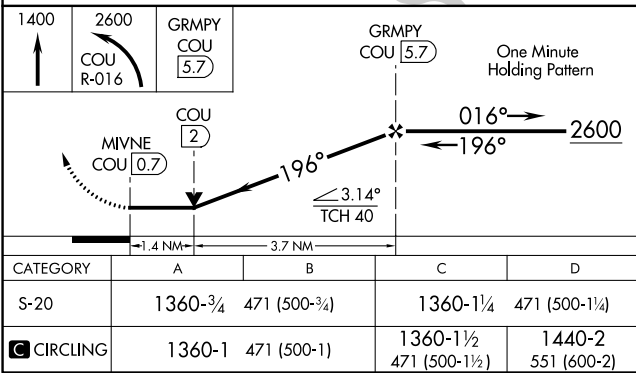
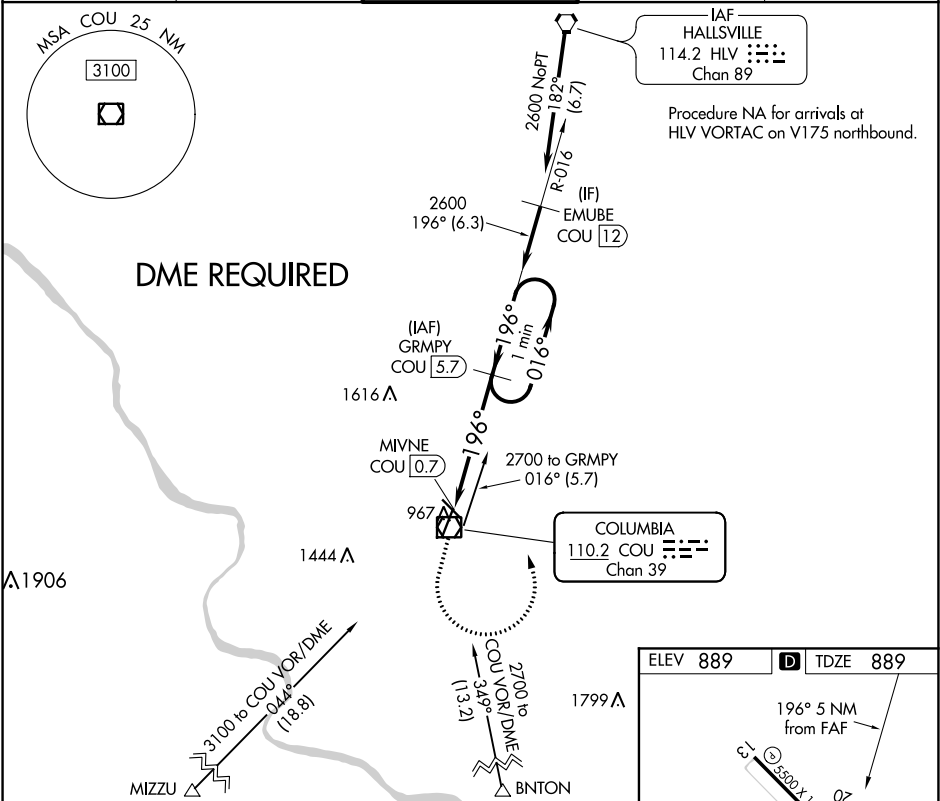


VOR/DME COU	APP CRS	Rwy Idg	6501
110.2	196°	TDZE	889
Chan 39		Apt Elev	889

VOR Y RWY 20
COLUMBIA RGNL (COU)

V Circling NA for Cat D west of Rwy 2 and 13. DME required.	ODALS	MISSED APPROACH: Climb to 1400 then climbing left turn to 2600 on COU VOR/DME R-016 to GRMPY/COU 5.7 DME and hold.
--	-------	--

ATIS 128.45	MIZZU APP CON 124.375 353.7	COLUMBIA TOWER ★ 119.3 (CTAF) 0 363.25	GND CON 121.6	UNICOM 122.95
----------------	--------------------------------	---	------------------	------------------



NC-3, 03 DEC 2020 to 31 DEC 2020

NC-3, 03 DEC 2020 to 31 DEC 2020