

WAAS CH <b>93599</b> <b>W20A</b>	APP CRS <b>201°</b>	Rwy Idg TDZE Apt Elev	<b>6501</b> <b>889</b> <b>889</b>
--	------------------------	-----------------------------	---

RNAV (GPS) RWY 20

COLUMBIA RGNL (COU)

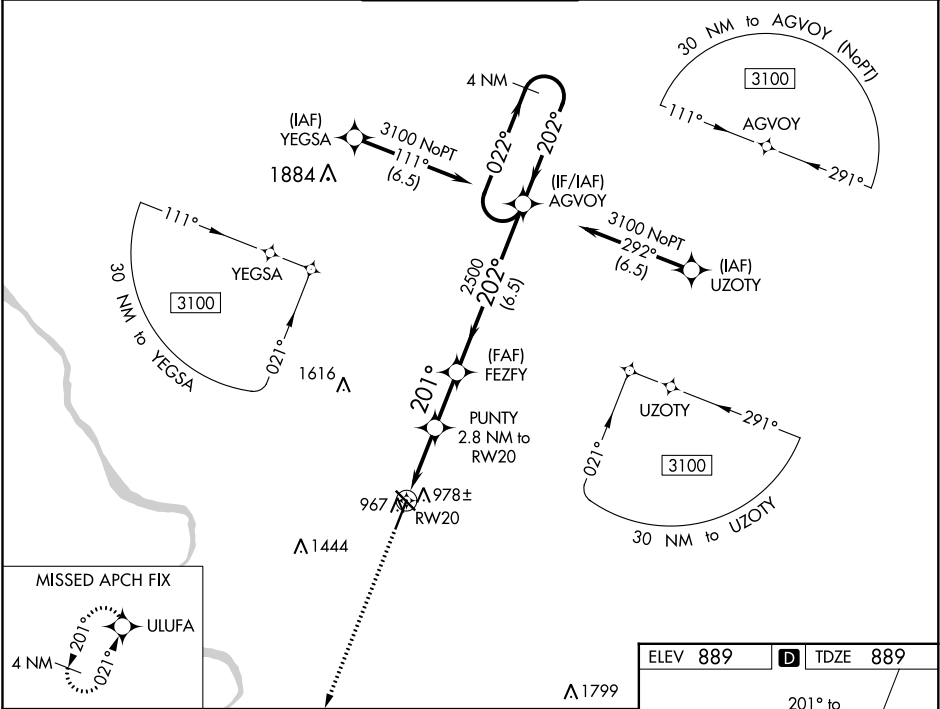
▼

For uncompensated Baro-VNAV systems, LNAV/VNAV NA below -17°C (2°F) or above 54°C (130°F). Circling NA for Cat D west of Rwy 2 and 13.  
DME/DME RNP-0.3 NA. For inop ALS, increase LNAV Cat A/B visibility to ¾ SM.

ODALS

MISSED APPROACH: Climb to 3100 direct ULUFA and hold.

ATIS <b>128.45</b>	MIZZU APP CON <b>124.375 353.7</b>	COLUMBIA TOWER ★ <b>119.3 (CTAF) 363.25</b>	GND CON <b>121.6</b>	UNICOM <b>122.95</b>
-----------------------	---------------------------------------	--	-------------------------	-------------------------



3100

ULUFA

\*LNAV only

\*1 NM to RW20

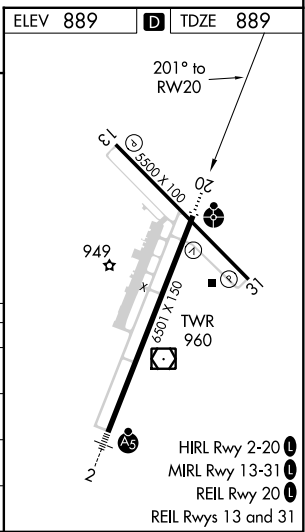
1 NM

1.8 NM

2.1 NM

6.5 NM

CATEGORY	A	B	C	D
LPV DA	1139-¾	250 (300-¾)		
LNAV/VNAV DA	1139-¾	250 (300-¾)		
LNAV MDA	1240-¾	351 (400-¾)	1240-⅞	351 (400-⅞)
CIRCLING	1300-1 411 (500-1)	1340-1 451 (500-1)	1340-1½ 451 (500-1½)	1440-2 551 (600-2)



NC-3, 03 DEC 2020 to 31 DEC 2020

NC-3, 03 DEC 2020 to 31 DEC 2020