

| | | |
|--|------------------------|---|
| WAAS CH 61133 W18A | APP CRS 179° | Rwy Idg 5500 TDZE 883 Apt Elev 910 |
|--|------------------------|---|

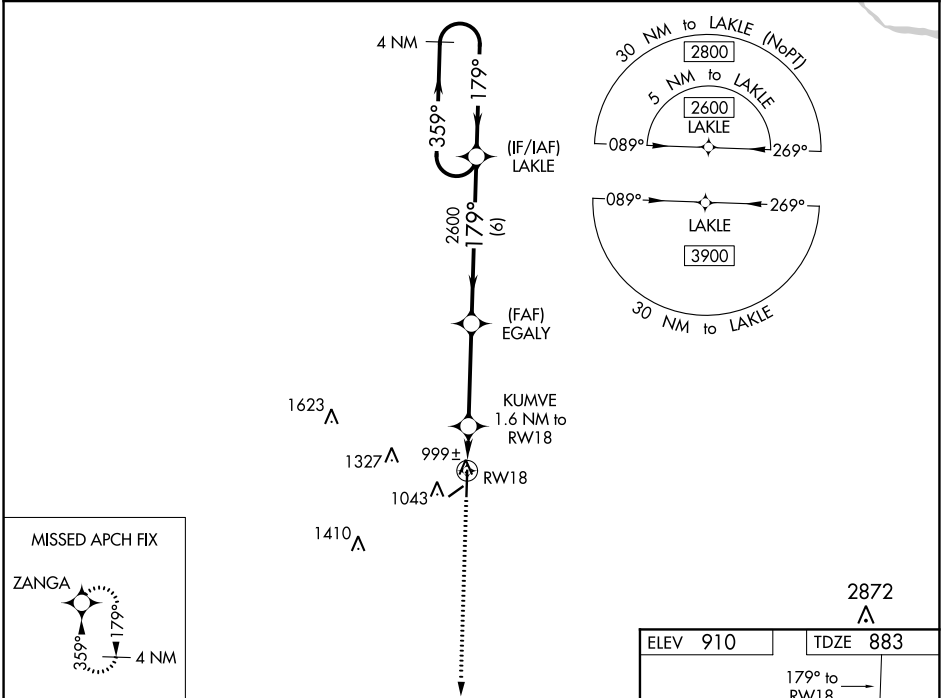
RNAV (GPS) RWY 18

SEDALIA RGNL (DMO)

⚠ DME/DME RNP-0.3 NA. When local altimeter setting not received, use Whiteman AFB altimeter setting: increase all DA 46 feet and LNAV/VNAV visibility 1/8 mile; increase all MDA 60 feet and Cats C and D visibilities 1/4 mile. For uncompensated Baro-VNAV systems, LNAV/VNAV NA below -16°C (3°F) or above 54°C (130°F). Baro-VNAV and VDP NA when using Whiteman AFB altimeter setting. Night Landing Rwy 5, 23 NA.

MISSED APPROACH:
Climb to 2600 direct ZANGA and hold.

| | | |
|------------------------|--|---------------------------------|
| ASOS 120.525 | WHITEMAN APP CON* 127.45 284.0 | UNICOM 122.8 (CTAF) 0 |
|------------------------|--|---------------------------------|



| | | | | | |
|--------------|-----------------------|-----------------------|-----------------------|-------------------------------|--|
| 2600 ZANGA | | EGALY 2600 | | LAKLE 4 NM Holding Pattern | |
| *LNAV only | | KUMVE 1.6 NM to RW18 | | RW18 1 NM to RW18 | |
| *1420 | | *179° | | 359° → 2600 | |
| GP 3.00° | | TCH 37 | | | |
| CATEGORY | A | B | C | D | |
| LPV DA | | 1133-1 | 250 (300-1) | | |
| LNAV/VNAV DA | | 1155-1 | 272 (300-1) | | |
| LNAV MDA | | 1260-1 | 377 (400-1) | | |
| CIRCLING | 1360-1 450 (500-1) | 1460-1 550 (600-1) | 1640-2 730 (800-2) | 1640-2 1/4 730 (800-2 1/4) | |

