

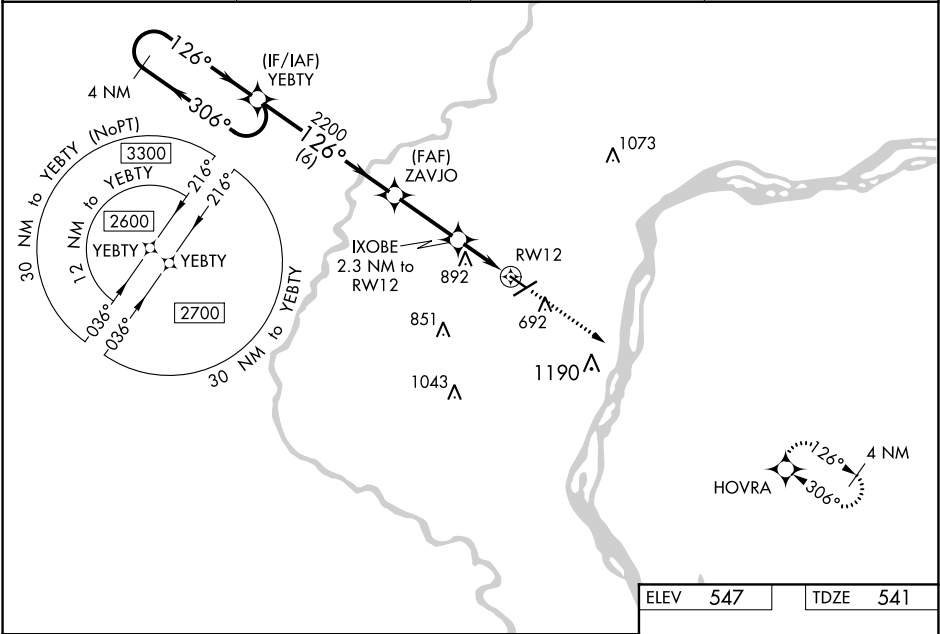
WAAS CH <b>56336</b> <b>W12A</b>	APP CRS <b>126°</b>	Rwy Idg <b>4000</b> TDZE <b>541</b> Apt Elev <b>547</b>
--	------------------------	---

**RNAV (GPS) RWY 12**  
MUSCATINE MUNI (MUT)

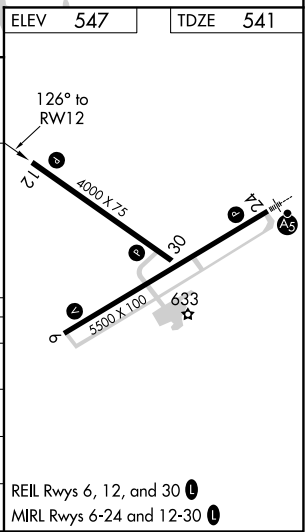
**⚠** DME/DME RNP-0.3 NA. Helicopter visibility reduction below 1 SM NA. VDP and Baro-VNAV NA with Iowa City altimeter setting. When local altimeter setting not received, use Iowa City altimeter setting and increase all DA 76 feet and all MDA 80 feet, increase LPV, LNAV/VNAV all Cals visibility ½ mile. For uncompensated Baro-VNAV systems, LNAV/VNAV NA below -16°C (4°F) or above 54°C (130°F).

MISSED APPROACH: Climb to 2700 direct HOVRA and hold.

AWOS-3 <b>119.775</b>	QUAD CITY APP CON ★ <b>133.275 257.8</b>	CINC DEL <b>119.125</b>	UNICOM <b>122.7 (CTAF) 0</b>
--------------------------	---	----------------------------	---------------------------------



4 NM Holding Pattern		YEBTY	ZAVJO	IXOBE 2.3 NM to RWY12	2700	HOVRA
2600 ← 306°		126° →	2200	*1300	↑	★
GP 3.00°		TCH 44	6 NM	2.8 NM	0.5	1.8
CATEGORY	A	B	C	D		
LPV DA	1207-2½	666 (700-2½)		NA		
LNAV/VNAV DA	1223-2½	682 (700-2½)		NA		
LNAV MDA	1140-1	599 (600-1)		NA		
CIRCLING	1140-1 593 (600-1)	1200-1 653 (700-1)		NA		



NC-3, 03 DEC 2020 to 31 DEC 2020

NC-3, 03 DEC 2020 to 31 DEC 2020