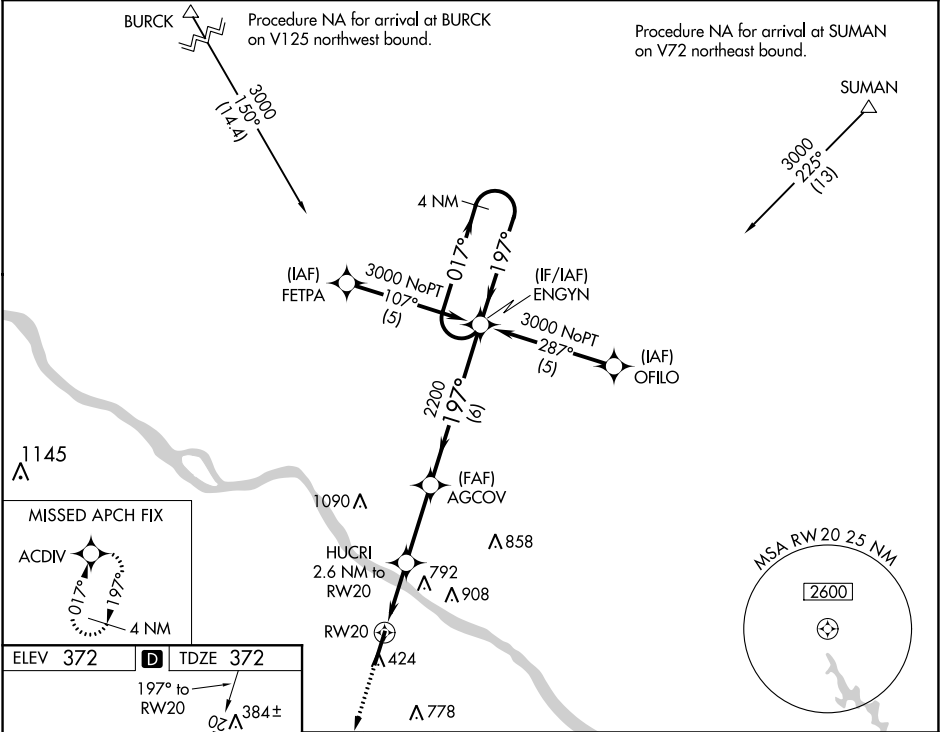


WAAS CH 53418 W20A	APP CRS 197°	Rwy Idg TDZE 372 Apt Elev 372
--	------------------------	---

RNAV (GPS) RWY 20
PERRYVILLE RGNL (PCD)

<p>⚠ For uncompensated Baro-VNAV systems, LNAV/VNAV NA below -15°C (5°F) or above 48°C (118°F). DME/DME RNP-0.3 NA. Rwy 20 helicopter visibility reduction below ¾ SM NA.</p>	<p>MISSED APPROACH: Climb to 3000 direct ACDIV and hold.</p>
--	--

AWOS-3PT 118.95	KANSAS CITY CENTER 127.475 346.275	UNICOM 122.8 (CTAF) 0
---------------------------	--	---------------------------------



ELEV 372	D	TDZE 372
197° to RW20		
02° 384±		
7003 x 100		
MIRL Rwy 2-20		
REIL Rwy 2 and 20		
3000	ACDIV	ENGYN
HUCRI 2.6 NM to RW20	AGCOV 2200	4 NM Holding Pattern
*LNAV only	1.8 NM to RW20	017° 3000
RW20	1240*	GP 3.00° TCH 45
1.8	0.8	2.9
6		
CATEGORY	A	B
LPV DA	622-1	250 (300-1)
LNAV/VNAV DA	697-1½	325 (400-1½)
LNAV MDA	980-1 608 (700-1)	980-1¾ 608 (700-1¾)
CIRCLING	980-1 608 (700-1)	1000-1¾ 628 (700-1¾)
		1100-2¼ 728 (800-2¼)

NC-3, 03 DEC 2020 to 31 DEC 2020

NC-3, 03 DEC 2020 to 31 DEC 2020