

VOR/DME JWJ	APP CRS	Rwy Idg	5007
109.4	320°	TDZE	973
Chan 31		Apt Elev	975

VOR RWY 31

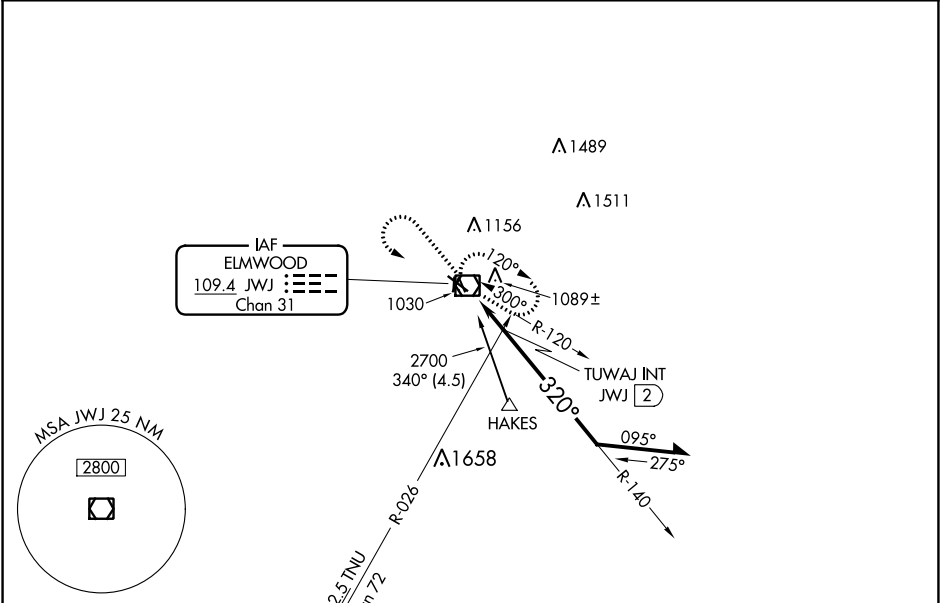
MARSHALLTOWN MUNI (MIW)

⚠

When local altimeter setting not received, use Grinnell altimeter setting and increase all MDA 80 feet; increase S-31 Cat C visibility $\frac{1}{4}$ SM, Circling Cat C visibility $\frac{1}{2}$ SM, and Circling Cat D visibility $\frac{1}{4}$ SM, and increase TUWJ fix minimums Cat C visibility $\frac{3}{8}$ SM, Cat D visibility $\frac{1}{2}$ SM, and Circling Cat D visibility $\frac{1}{4}$ SM.

MISSED APPROACH: Climb to 2700 then left turn direct JWJ VOR/DME and hold.

ASOS 128.325	WATERLOO APP CON * 120.9	CLNC DEL 120.9	UNICOM 122.8 (CTAF)
-----------------	-----------------------------	-------------------	------------------------



ELEV 975	TDZE 973
----------	----------

2700

JWJ

*1700 when using Grinnell altimeter setting.

JWJ VOR/DME

Remain within 10 NM

TUWJ INT JWJ

140°

320°

2700

1620*

3.03°

TCH 37

1.9 NM

0.1

CATEGORY	A	B	C	D
S-31	1620-1 647 (700-1)		1620-1 $\frac{3}{4}$ 647 (700-1 $\frac{3}{4}$)	1620-2 647 (700-2)
CIRCLING	1620-1 646 (700-1)		1620-1 $\frac{7}{8}$ 645 (700-1 $\frac{7}{8}$)	1840-2 $\frac{3}{4}$ 865 (900-2 $\frac{3}{4}$)
TUWJ FIX MINIMUMS				
S-31	1360-1 387 (400-1)			1360-1 $\frac{1}{4}$ 387 (400-1 $\frac{1}{4}$)
CIRCLING	1400-1 426 (500-1)	1440-1 466 (500-1)	1460-1 $\frac{1}{2}$ 485 (500-1 $\frac{1}{2}$)	1840-2 $\frac{3}{4}$ 865 (900-2 $\frac{3}{4}$)

MIRL Rwy 13-31 and 18-36

REIL Rwy 13 and 31