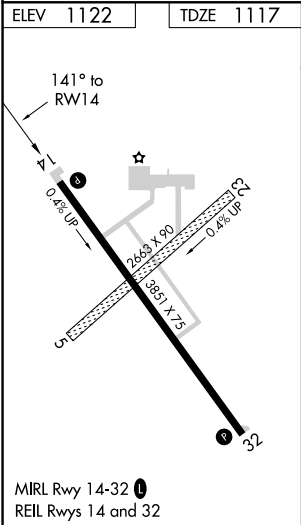
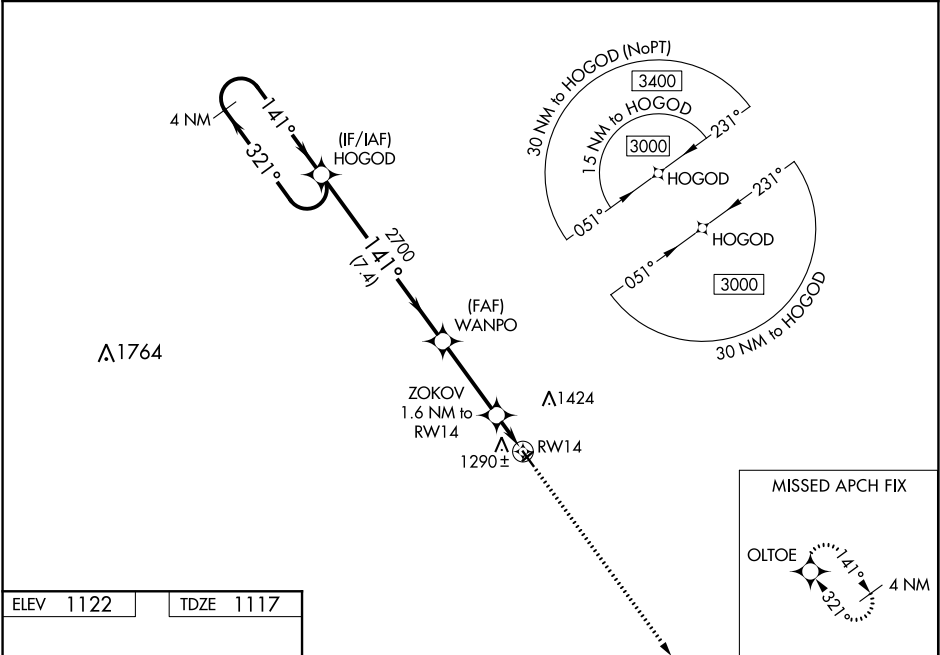


⚠

Baro-VNAV NA when using Clarion altimeter setting. For uncompensated Baro-VNAV systems, LNAV/VNAV NA below -17°C (2°F) or above 54°C (130°F). DME/DME RNP-0.3 NA. When local altimeter setting not received, use Clarion altimeter setting and increase all DAs 49 feet, and all MDA 60 feet; increase LNAV/VNAV all Cats visibility ½ mile. Helicopter visibility reduction below ¾ SM NA.

MISSED APPROACH: Climb to 3000 direct OLTÖE and hold.

AWOS-3 127.825	MINNEAPOLIS CENTER 134.0 288.3	UNICOM 122.8 (CTAF) 0
-------------------	-----------------------------------	--------------------------



4 NM Holding Pattern HOGOD

VGSI and RNAV glidepath not coincident (VGSI Angle 3.25/TCH 25).

3000

141°

321°

2700

141°

2700

1640

7.4 NM

3.3 NM

1.6 NM

3000

OLTÖE

\*LNNAV only

CATEGORY	A	B	C	D
LPV DA	1367-1	250 (300-1)	NA	
LNNAV/VNAV DA	1463-1¼	346 (400-1¼)	NA	
LNNAV MDA	1540-1	423 (500-1)	NA	
CIRCLING	1600-1	478 (500-1)	NA	