


LOC I-FZU 111.1	APP CRS 259°	Rwy Idg TDZE 462 Apt Elev 463
---------------------------	------------------------	---

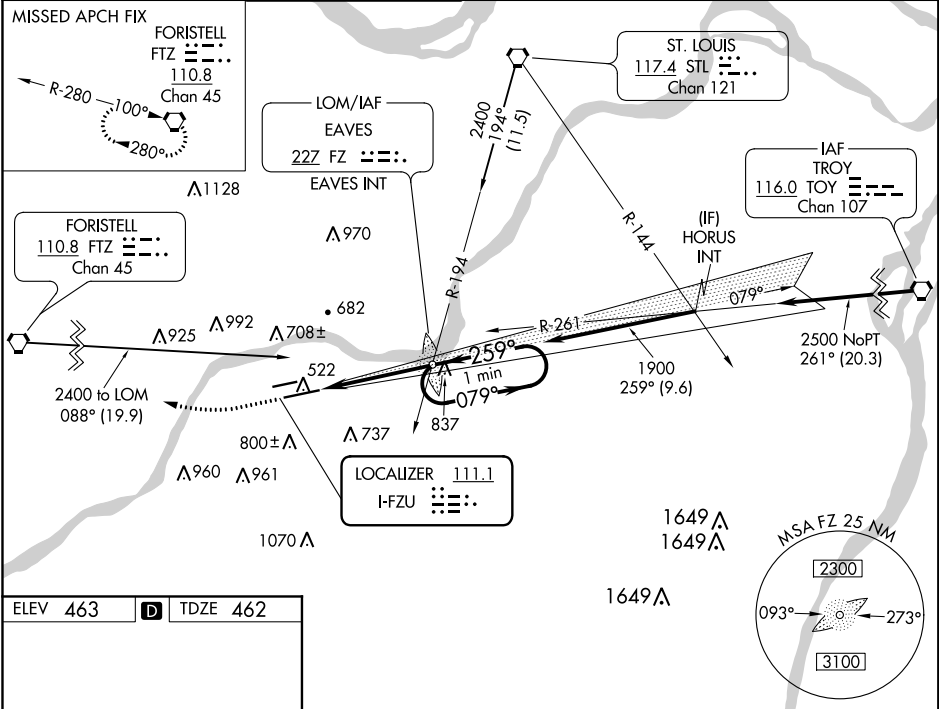
ILS or LOC RWY 26L
SPIRIT OF ST LOUIS (SUS)

⚠ When local altimeter setting not received, use St Louis Lambert Intl altimeter setting and increase all DA to 719 and all MDA 60 feet, increase S-LOC Cat C and D visibility 1/8 mile. For inop MALSR, increase S-LOC 26L Cats C/D visibility to 1 7/8 miles. For inop MALSR when using St Louis Lambert Intl altimeter setting, increase S-LOC 26L Cats C/D visibility to 2 miles. *RVR 1800 authorized with the use of FD or AP or HUD to DA (NA when using St Louis Lambert Intl altimeter setting).

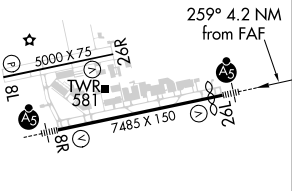
MALSR


MISSED APPROACH:
Climb to 2400 then right turn direct FTZ VORTAC and hold.

ATIS 134.8	ST. LOUIS APP CON 126.5 254.3	SPIRIT TOWER* 124.75 (CTAF) 0 257.2	GND CON 121.7	CLNC DEL 133.1	ST. LOUIS CLNC DEL 121.7 (when tower closed)	UNICOM 122.95
----------------------	---	---	-------------------------	--------------------------	---	-------------------------



ELEV **463** D TDZE **462**

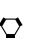


HIRL Rwy 8R-26L
MIRL Rwy 8L-26R

FAF to MAP 4.2 NM

Knots	60	90	120	150	180
Min:Sec	4:12	2:48	2:06	1:41	1:24

2400
↑

FTZ


FZ LOM
EAVES INT

1883

079° → 2000
← 259°
1900

GS 3.00°
TCH 55

CATEGORY	A	B	C	D
S-ILS 26L *	662/24 200 (200-1/2)			
S-LOC 26L	1140/24 678 (700-1/2)		1140-1 1/2 678 (700-1/2)	
CIRCLING	1140-1 677 (700-1)		1140-2 677 (700-2) 1140-2 1/4 677 (700-2 1/4)	

NC-3, 03 DEC 2020 to 31 DEC 2020

NC-3, 03 DEC 2020 to 31 DEC 2020