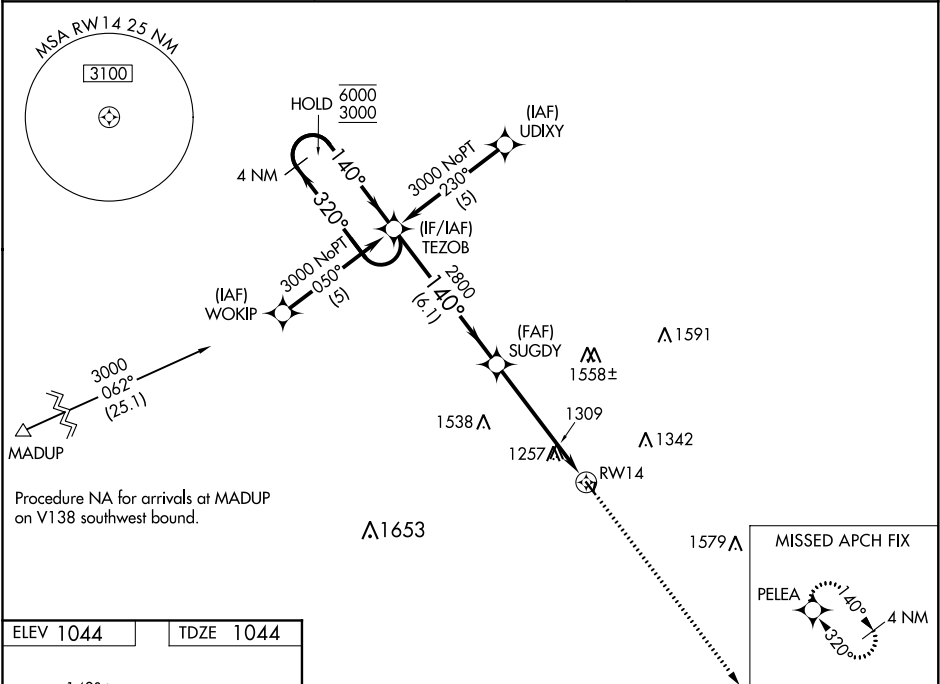


WAAS CH 40219 W14A	APP CRS 140°	Rwy Idg 3200 TDZE 1044 Apt Elev 1044
--	------------------------	---

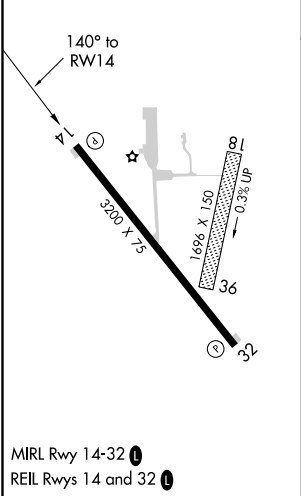
RNAV (GPS) RWY 14
JEFFERSON MUNI (EFW)

RNP APCH.	MISSED APPROACH: Climb to 3000 direct PELEA and hold.
NA Procedure NA at night. Rwy 14 helicopter visibility reduction below 1 SM NA. Baro-VNAV NA. Use Perry altimeter setting.	

PRO AWOS-3 118.0	MINNEAPOLIS CENTER 134.0 288.3	UNICOM 122.8 (CTAF) 0
----------------------------	--	---------------------------------



ELEV 1044	TDZE 1044
------------------	------------------



VGSI and RNAV glidepath not coincident (VGSI Angle 3.00/TCH 28).				3000	PELEA
4 NM Holding Pattern				↑	✧
6000 ← 320° 3000 ← 140°				SUGDY 2800	
GP 3.00° TCH 40				RWY 14	
				6.1 NM	5.3 NM
CATEGORY	A	B	C	D	
LPV DA	1330-1	286 (300-1)	NA		
LNAV/VNAV DA	1907-3	863 (900-3)	NA		
LNAV MDA	1780-1	736 (800-1)	NA		
CIRCLING	1780-1 736 (800-1)	1820-1¼ 776 (800-1¼)	NA		

NC-3, 03 DEC 2020 to 31 DEC 2020

NC-3, 03 DEC 2020 to 31 DEC 2020