

WAAS CH 82438 W30A	APP CRS 305°	Rwy Idg 4000 TDZE 1121 Apt Elev 1125
--	------------------------	---

RNAV (GPS) RWY 30

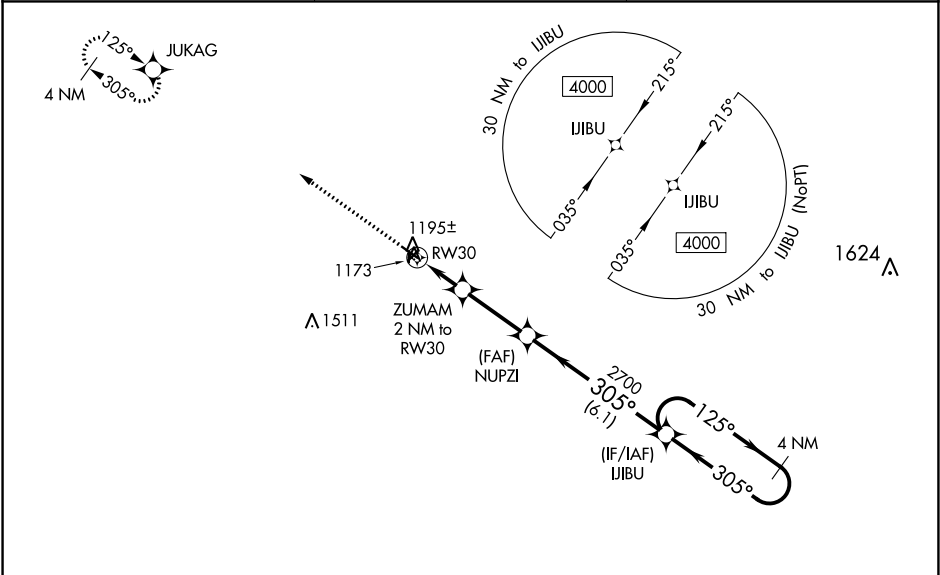
NORTHEAST IOWA RGNL (CCY)

⚠

For uncompensated Baro-VNAV systems, LNAV/VNAV NA below -17°C (2°F) or above 54°C (130°F). DME/DME RNP-0.3 NA. Helicopter visibility reduction below ¾ SM NA. When local altimeter setting not received, use Waterloo altimeter setting and increase all DA 110 feet and visibility ¼ mile. Increase all MDA 120 feet, increase LNAV Cat C visibility ¾ mile, and Circling visibility Cat C ½ mile. VDP and Baro-VNAV NA when using Waterloo altimeter setting. Circling Rwy 4-22 and 18-36 NA.

MISSED APPROACH: Climb to 4000 direct JUKAG and hold, continue climb-in-hold to 4000.

AWOS-3 125.525	WATERLOO APP CON ★ 118.9 251.15	UNICOM 122.8 (CTAF) ①
--------------------------	---	---------------------------------



ELEV 1125

TDZE 1121

125°

305°

4000 X 75

1780 X 170

2536

36

305° to RW30

MIRL Rwy 12-30 ①
REIL Rwy 12 and 30 ①

4000

JUKAG

VGSI and RNAV glidepath not coincident (VGSI Angle 3.00/TCH 27).

4 NM Holding Pattern

ZUMAM 2 NM to RW30

NUPZI 2700

IJIBU

125°

305°

4000

GP 3.00° TCH 40

* LNAV only

RW30

* 1 NM to RW30

* 1780

2700

1 NM

1 NM

2.9 NM

6.1 NM

CATEGORY	A	B	C	D
LPV DA	1371-1	250 (300-1)		NA
LNAV/VNAV DA	1371-1	250 (300-1)		NA
LNAV MDA	1460-1	339 (400-1)		NA
CIRCLING	1520-1 395 (400-1)	1580-1 455 (500-1)	1760-1¾ 635 (700-1¾)	NA