

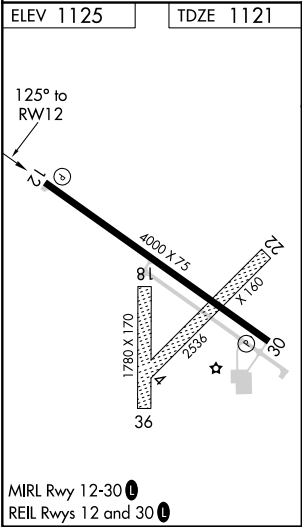
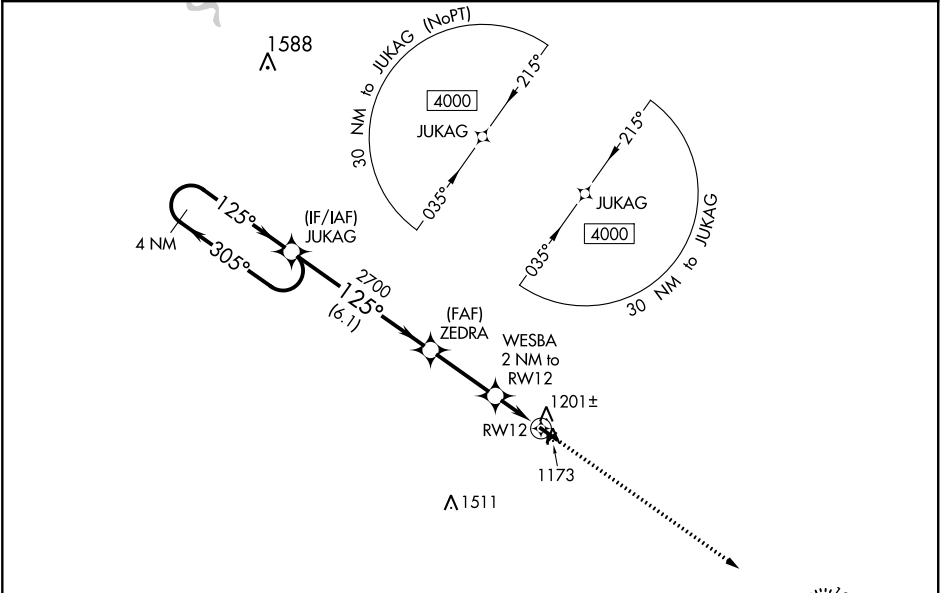
WAAS CH <b>58038</b> <b>W12A</b>	APP CRS <b>125°</b>	Rwy Idg <b>4000</b> TDZE <b>1121</b> Apt Elev <b>1125</b>
--	------------------------	---

**RNAV (GPS) RWY 12**  
NORTHEAST IOWA RGNL (CCY)

**⚠** For uncompensated Baro-VNAV systems, LNAV/VNAV NA below -17°C (2°F) or above 54°C (130°F). DME/DME RNP-0.3 NA. When local altimeter setting not received, use Waterloo altimeter setting and increase all DA 110 feet and visibilities ¼ mile. Increase all MDA 120 feet and increase LNAV Cat C visibility ¾ mile, and Circling visibility Cat C ½ mile. VDP and Baro-VNAV NA when using Waterloo altimeter setting. Circling Rwy 4-22 and 18-36 NA.

**MISSED APPROACH:** Climb to 4000 direct IJBU and hold, continue climb-in-hold to 4000.

AWOS-3 <b>125.525</b>	WATERLOO APP CON ★ <b>118.9 251.15</b>	UNICOM <b>122.8</b> (CTAF) <b>0</b>
--------------------------	---	--



4 NM Holding Pattern				VGSI and RNAV glidepath not coincident (VGSI Angle 3.00/TCH 26).		4000	IJBU
JUKAG				ZEDRA	WESBA	*LNAV only	
4000				2700	2 NM to RWY 12	*1 NM to RWY 12	
GP 3.00° TCH 40				*1780	RWY 12		
				6.1 NM	2.9 NM	1 NM	1 NM
CATEGORY	A	B	C	D			
LPV DA	1371-1	250 (300-1)		NA			
LNAV/VNAV DA	1371-1	250 (300-1)		NA			
LNAV MDA	1460-1	339 (400-1)		NA			
CIRCLING	1520-1 395 (400-1)	1580-1 455 (500-1)	1760-1¾ 635 (700-1¾)	NA			

NC-3, 03 DEC 2020 to 31 DEC 2020

NC-3, 03 DEC 2020 to 31 DEC 2020