

WAAS CH <b>72828</b> <b>W02A</b>	APP CRS <b>018°</b>	Rwy Idg TDZE <b>1151</b> Apt Elev <b>1165</b>
--	------------------------	---

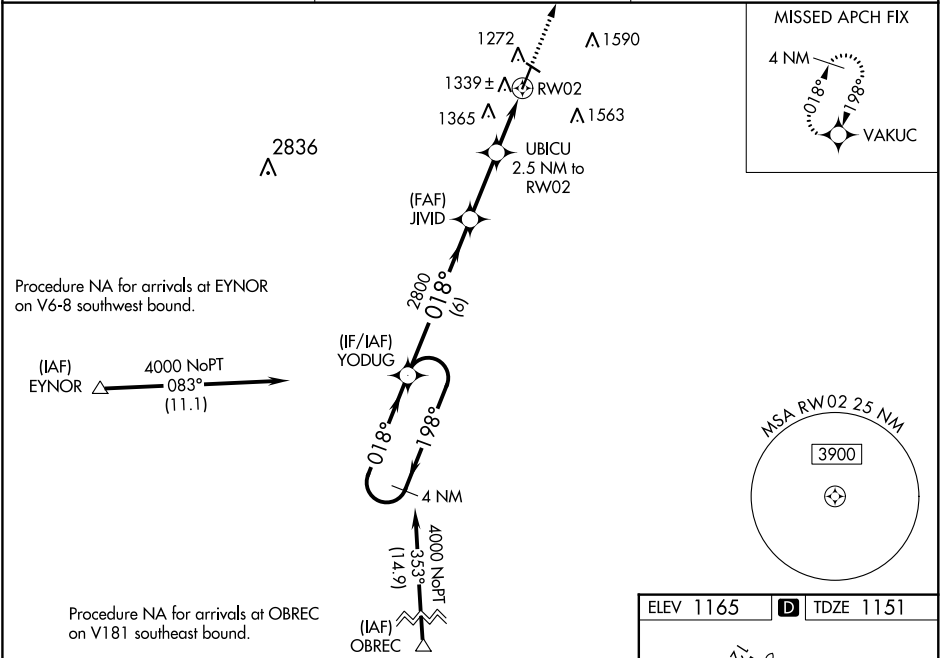
RNAV (GPS) RWY 2

ATLANTIC MUNI (AIO)

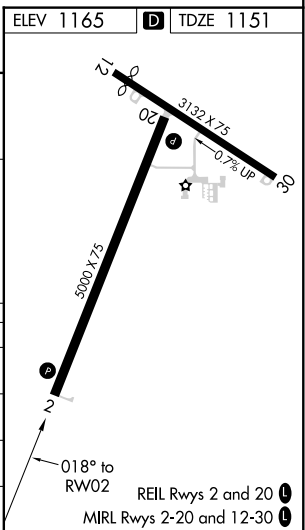
**⚠** DME/DME RNP -0.3 NA. Baro-VNAV and VDP NA when using Harlan altimeter setting. For uncompensated Baro-VNAV systems, LNAV/VNAV NA below -17°C (2°F) or above 54°C (130°F). When local altimeter setting not received, use Harlan altimeter setting; increase LPV DA to 1450 feet, LNAV/VNAV DA to 1563 feet, and all MDA 60 feet; increase LPV all Cats visibility ½ SM, LNAV/VNAV all Cats visibility ½ SM, LNAV Cat C visibility ½ SM, and increase circling Cat C visibility ¼ SM. Circling Rwy 12, 30 NA at night.

MISSED APPROACH:  
Climb to 4000 direct  
VAKUC and hold.

AWOS-3 <b>127.825</b>	MINNEAPOLIS CENTER <b>119.6 290.4</b>	UNICOM <b>122.7 (CTAF)</b>
--------------------------	--	-------------------------------



VGSI and RNAV glidepath not coincident. (VGSI Angle 3.00/TCH 31).				
4000		YODUG	JIVID	UBICU
4000		198°	018°	2800
GP 3.00°				
TCH 39				
		6 NM	2.6 NM	1.1 NM
CATEGORY	A	B	C	D
LPV DA	1401-7/8	250 (300-7/8)	NA	NA
LNAV/VNAV DA	1514-1 1/4	363 (400-1 1/4)	NA	NA
LNAV MDA	1620-1	469 (500-1)	1620-1 3/8 469 (500-1 3/8)	NA
CIRCLING	1760-1	595 (600-1)	1780-1 3/4 615 (700-1 3/4)	NA



NC-3, 03 DEC 2020 to 31 DEC 2020

NC-3, 03 DEC 2020 to 31 DEC 2020