


WAAS CH 61333 W18A	APP CRS 181°	Rwy Idg TDZE 1338 Apt Elev 1339
--	------------------------	---

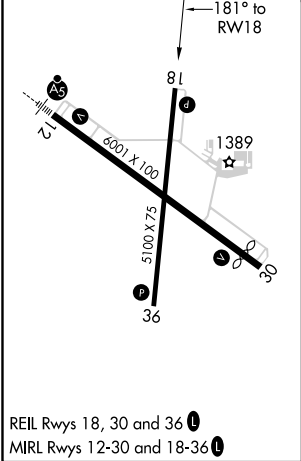
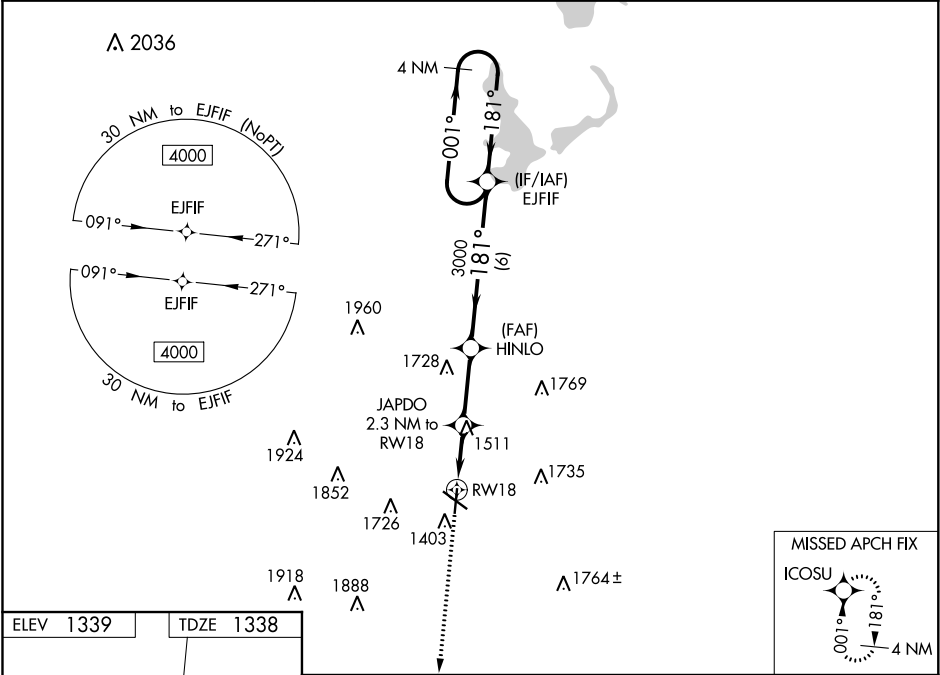
RNAV (GPS) RWY 18



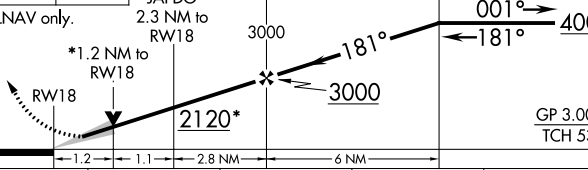

SPENCER MUNI (SPW)

Baro-VNAV and VDP NA when using Estherville altimeter setting. For uncompensated Baro-VNAV systems, LNAV/VNAV NA below -20°C (-4°F) or above 54°C (130°F). DME/DME RNP-0.3 NA. When local altimeter setting not received, use Estherville altimeter setting and increase all DA/MDA 60 feet; increase LNAV/VNAV all Cals visibility to 1½ mile.

MISSED APPROACH:
Climb to 4000 direct ICOSU and hold.

ASOS 126.625	MINNEAPOLIS CENTER 127.75 257.7	UNICOM 123.0 (CTAF) 
------------------------	---	---



4000	ICOSU				
					
*LNAV only.					
					
CATEGORY	A	B	C	D	
LPV DA	1588-1	250 (300-1)	NA		
LNAV/VNAV DA	1608-1	270 (300-1)	NA		
LNAV MDA	1780-1	442 (500-1)	NA		
 CIRCLING	1780-1 441 (500-1)	1820-1 481 (500-1)	NA		