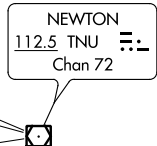
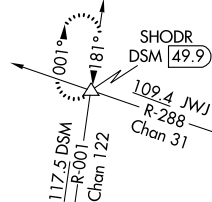


ILS or LOC RWY 1
AMES MUNI (AMW)

MISSED APPROACH: Climb to 1700 then climbing left turn to 4000 on heading 245° and JWW VOR/DME R-260 to WURPU INT/JWW 46.9 DME and hold.

UNICOM
122.7 (CTAF)  

ELEV	956	TDZE	956
FAF to MAP 5.3 NM			
Knots	60	90	120 150 180
Min:Sec	5:18	3:32	2:39 2:07 1:46

NC-3, 03 DEC 2020 to 31 DEC 2020