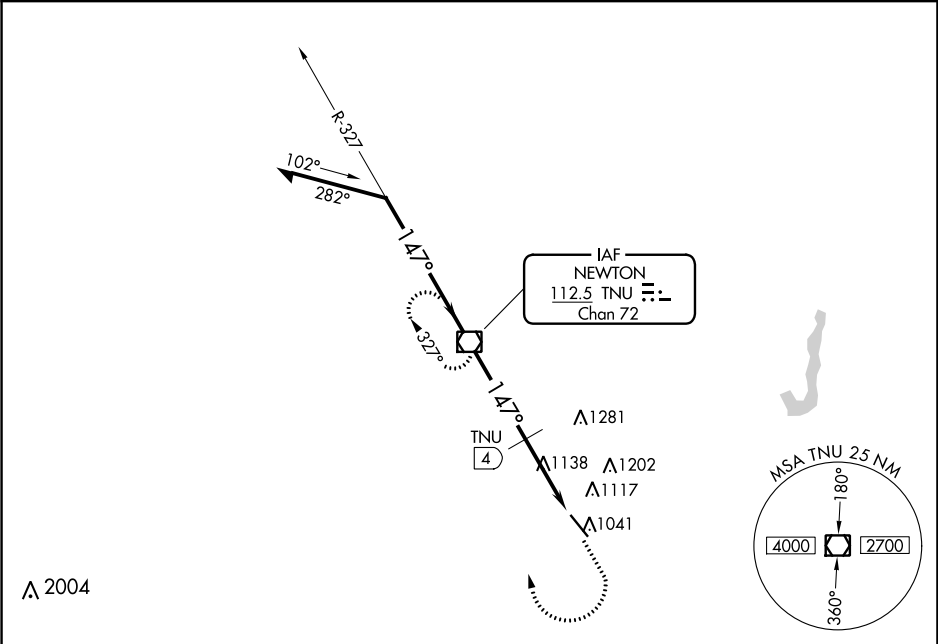


VOR/DME TNU	APP CRS	Rwy Idg	5600
112.5	147°	TDZE	952
Chan 72		Apt Elev	953

VOR RWY 14

NEWTON MUNI-EARL JOHNSON FIELD (TNU)

Rwy 14 helicopter visibility reduction below ¾ SM NA.		MISSED APPROACH: Climb to 2700, then right turn direct TNU VOR/DME and hold.	
AWOS-3	DES MOINES APP CON	CLNC DEL	UNICOM
132.275	123.9 307.15	126.3	122.8 (CTAF) 0



Remain within 10 NM		TNU VOR/DME		2700	TNU
2700		147°		2700	1440
		327°		4 NM	3.2 NM
CATEGORY	A	B	C	D	
S-14	1440-1	488 (500-1)	1440-1⅜ 488 (500-1⅜)	1440-1½ 488 (500-1½)	
CIRCLING	1440-1	487 (500-1)	1520-1½ 567 (600-1½)	1600-2 647 (700-2)	
DME MINIMUMS					
S-14	1400-1	448 (500-1)	1400-1⅜ 448 (500-1⅜)	1400-1½ 448 (500-1½)	
CIRCLING	1420-1 467 (500-1)	1440-1 487 (500-1)	1520-1½ 567 (600-1½)	1600-2 647 (700-2)	

ELEV 953	TDZE 952
147° 7.2 NM from FAF	
5000 x 100	
REIL Rwy 14 0	
MIRL Rwy 14-32 0	
FAF to MAP 7.2 NM	
Knots	60 90 120 150 180
Min:Sec	7:12 4:48 3:36 2:53 2:24