

VOR TBN <u>110.0</u>	APP CRS 138°	Rwy Idg 5535 TDZE 1158 Apt Elev 1160
--------------------------------	------------------------	---

VOR RWY 15
WAYNESVILLE-ST ROBERT RGNL FORNEY FIELD (TBN)

▼ Procedure NA when R-4501B or R-4501H in use. Inop table does not apply to S-15 Cat A and B or to ZUTMA fix minimums. Circling NA west of Rwy 15-33. When local altimeter setting not received, use Rolla National altimeter setting and increase all MDA's 80 feet and increase S-15 visibility Cats C/D ¼ SM and Circling Cat C visibility ½ SM. Inop table does not apply to Cats A/B when using Rolla National altimeter setting. For inop ALS when using Rolla National altimeter setting increase S-15 Cats C/D visibility to 1 ¾ SM. For inop ALS when using Rolla National altimeter setting increase S-15 ZUTMA fix minimums Cat C/D visibility to 1 ¾ SM. # DME from TBN LOC/DME.

MALSR

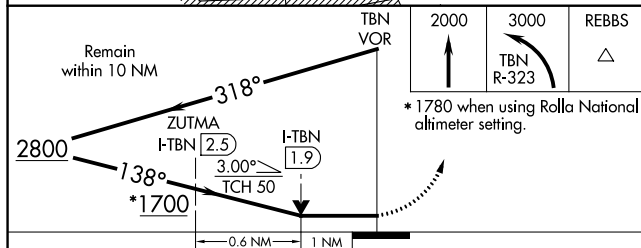
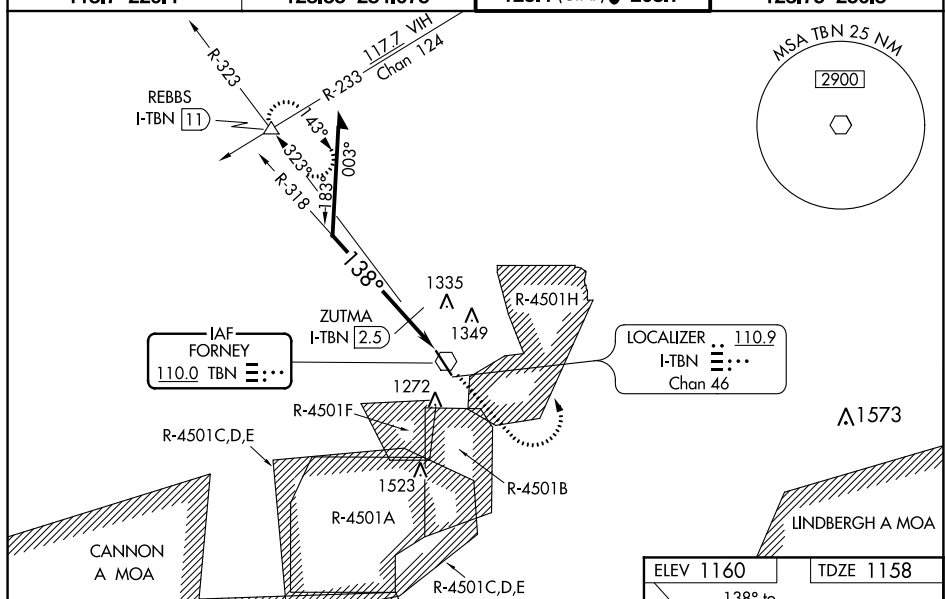
MISSED APPROACH: Climb to 2000 then climbing left turn to 3000 on TBN VOR R-323 to REBBS INT/I-TBN LOC/DME 11 DME and hold.



D-ATIS
118.7 229.4

KANSAS CITY CENTER
128.35 284.675

FORNEY TOWER ★
125.4 (CTAF) **L** 268.7

GND CON
123.75 256.8



CATEGORY	A	B	C	D
S-15	1700-1 542 (600-1)		1700-1 $\frac{1}{8}$ 542 (600-1 $\frac{1}{8}$)	
 CIRCLING	1700-1 540 (600-1)		1700-1 $\frac{5}{8}$ 540 (600-1 $\frac{5}{8}$)	1720-2 560 (600-2)
ZUTMA FIX MINIMUMS #				
S-15		1520-1 362 (400-1)		
 CIRCLING	1580-1 420 (500-1)	1660-1 500 (500-1)	1660-1 $\frac{1}{2}$ 500 (500-1 $\frac{1}{2}$)	1720-2 560 (600-2)

