

WAAS CH 53499 W15A	APP CRS 147°	Rwy Idg TDZE 1158 Apt Elev 1160
--	------------------------	---

RNAV (GPS) RWY 15
WAYNESVILLE-ST ROBERT RGNL FORNEY FIELD (TBN)

RNP APCH.

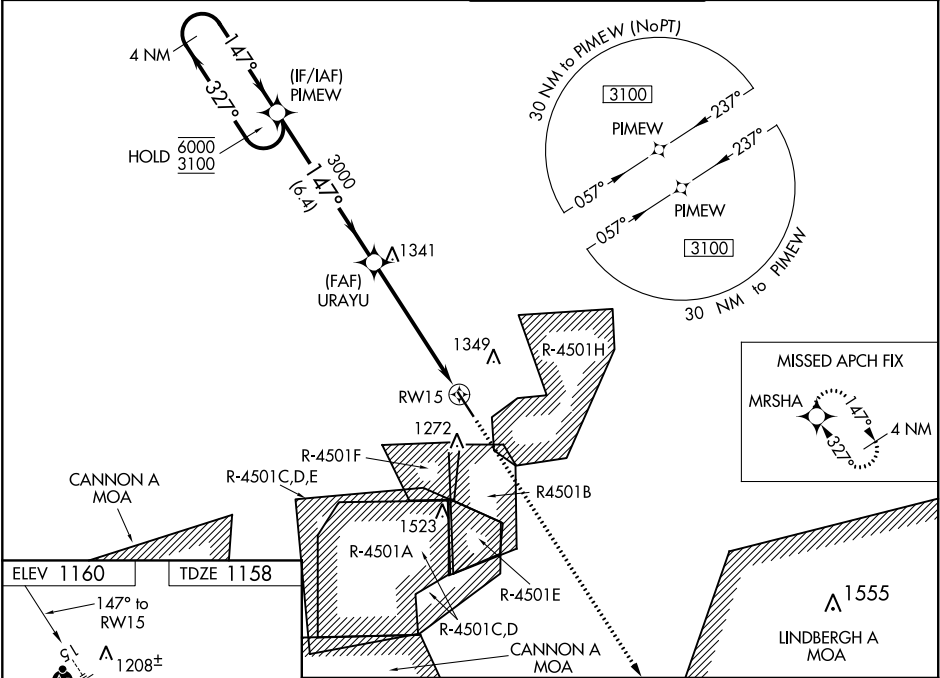
⚠ For uncompensated Baro-VNAV systems, LNAV/VNAV NA below -18°C or above 54°C. VDP and Baro-VNAV NA when using Rolla National altimeter setting. When local altimeter setting not received, use Rolla National altimeter setting and increase all LPV DA to 1427 and LNAV/VNAV DA to 1477; increase all MDAs 80 feet. Inop table does not apply. For inop ALS when using Rolla National altimeter setting increase LNAV Cat C/D visibility to 1 3/8 SM. Circling NA west of Rwy 15-33. Inop table does not apply to LPV, LNAV/VNAV, all Cats, and LNAV Cats A/B minimums when using Rolla National altimeter setting.

MALSR

AS

MISSED APPROACH:
Climb to 3100 direct
MRSHA and hold.

D-ATIS 118.7 229.4	KANSAS CITY CENTER 128.35 284.675	FORNEY TOWER ★ 125.4 (CTAF) 0 268.7	GND CON 123.75 256.8
------------------------------	---	---	--------------------------------



ELEV 1160 TDZE 1158

147° to RW15

1208±

1249

1271

HIRL Rwy 15-33

REIL Rwy 15 and 33

4 NM Holding Pattern

6000 3100

327° 147°

GP 3.00° TCH 47

3000

6.4 NM 4.6 NM 1 NM

URAYU

3100 MRSHA

*1 NM to RW15

*LNAV only

RW15

CATEGORY	A	B	C	D
LPV DA		1358-1	200 (200-1)	
LNAV/ VNAV DA		1408-1	250 (300-1)	
LNAV MDA		1520-1	362 (400-1)	
C CIRCLING	1580-1 420 (500-1)	1660-1 500 (500-1)	1660-1½ 500 (500-1½)	1720-2 560 (600-2)

NC-3, 03 DEC 2020 to 31 DEC 2020

NC-3, 03 DEC 2020 to 31 DEC 2020