

VORTAC FOD	APP CRS	Rwy Idg	5301
113.5	120°	TDZE	1128
Chan 82		Apt Elev	1157

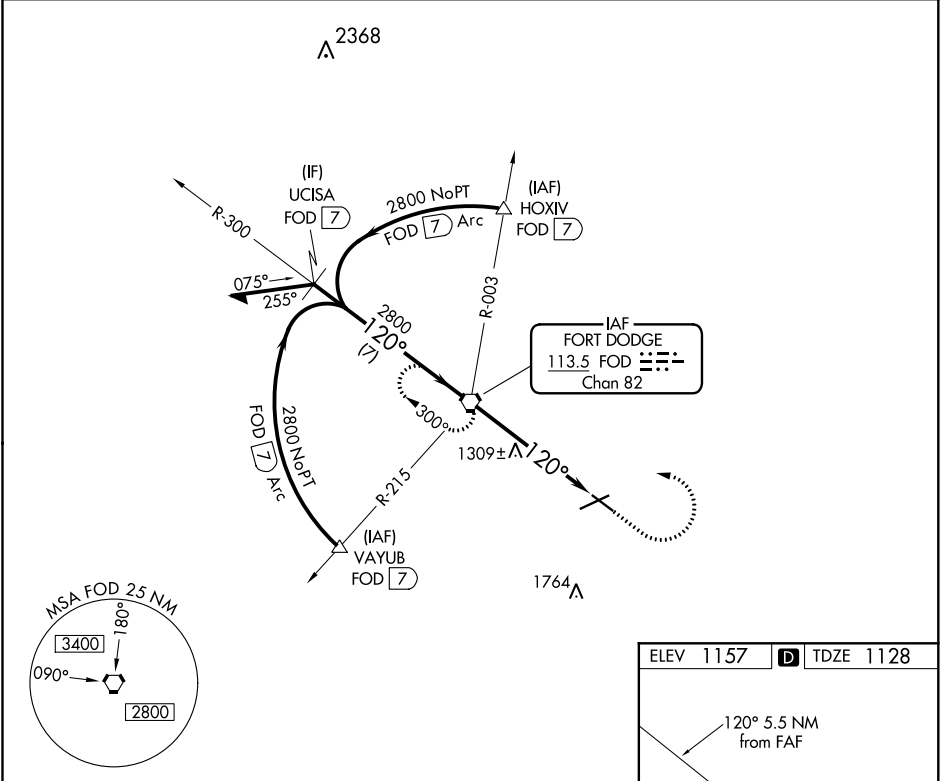
VOR RWY 12

FORT DODGE RGNL (FOD)

If local altimeter setting not received, use Webster City altimeter setting and increase all MDAs 60 feet. Visibility reduction by helicopters NA.

MISSED APPROACH: Climb to 2800 then left turn direct FOD VORTAC and hold.

AWOS-3PT 118,775	MINNEAPOLIS CENTER 134.0 288.3	UNICOM 123.0 (CTAF)
---------------------	-----------------------------------	------------------------



Remain within 10 NM

2800

300°

FOD VORTAC

2800

120°

2800

120°

2.80° TCH 51

5.5 NM

FOD 5.5

2800

FOD

VGSI and descent angles not coincident (VGSI Angle 3.00/TCH 51).

CATEGORY	A	B	C	D
S-12	1560-1	432 (500-1)	1560-1¼ 432 (500-1¼)	1560-1½ 432 (500-1½)
CIRCLING	1560-1 403 (500-1)	1620-1 463 (500-1)	1620-1½ 463 (500-1½)	1720-2 563 (600-2)

ELEV 1157 TDZE 1128

120° 5.5 NM from FAF

1254

6547 X 150

3301 X 100

1.2% UP

0.5% UP

MIRL Rwy 12-30
REIL Rws 12, 24 and 30
HIRL Rwy 6-24

FAF to MAP 5.5 NM

Knots	60	90	120	150	180
Min:Sec	5:30	3:40	2:45	2:12	1:50