

WAAS CH 61015 W06A	APP CRS 063°	Rwy Idg TDZE 1107 Apt Elev 1157
--	------------------------	---

RNAV (GPS) RWY 6

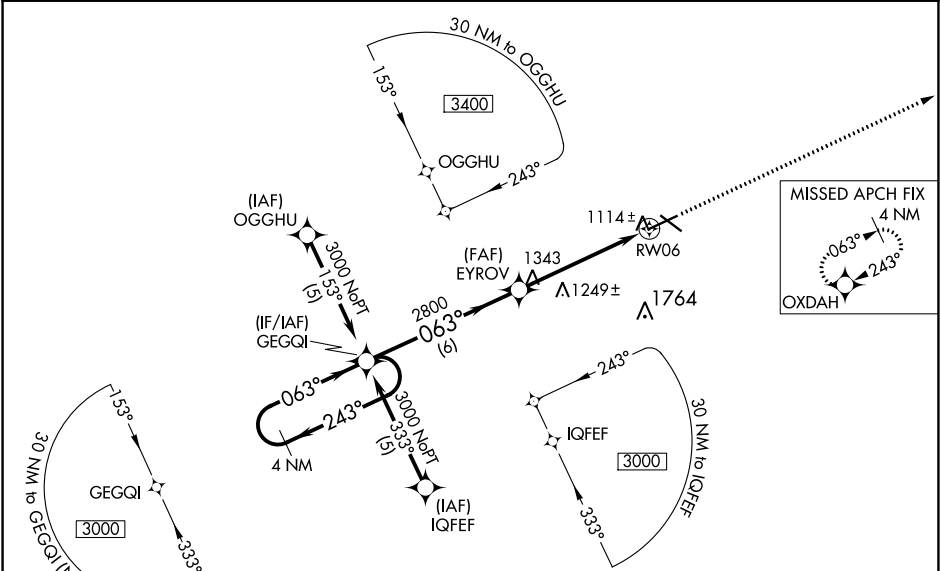
FORT DODGE RGNL (FOD)

Baro-VNAV NA when using Webster City altimeter setting. For uncompensated Baro-VNAV systems, LNAV/VNAV NA below -17°C (2°F) or above 46°C (114°F). DME/DME RNP-0.3 NA. VDP NA when using Webster City altimeter setting. When local altimeter setting not received, use Webster City altimeter setting and increase all DA 42 feet and all MDA 60 feet, increase visibility LNAV-VNAV all Cats and LNAV Cats C and D ¼ mile. For inoperative MALSR when using Webster City altimeter setting, increase LPV all Cats visibility to 1 mile.

MALSR

MISSED APPROACH:
Climb to 3000 direct
OXDAH and hold.

AWOS-3PT 118.775	MINNEAPOLIS CENTER 134.0 288.3	UNICOM 123.0 (CTAF) 1
----------------------------	--	---------------------------------



ELEV 1157

D

TDZE 1107

4 NM Holding Pattern

3000

243°

063°

GEGQI

EYROV

2800

063°

RW06

1.2 NM to RW06

*LNAV only.

GP 3.00°

TCH 54

CATEGORY	A	B	C	D
LPV DA	1307-½		200 (200-½)	
LNAV/VNAV DA	1525-1		418 (400-1)	
LNAV MDA	1500-½ 393 (400-½)		1500-1 393 (400-1)	
CIRCLING	1560-1 403 (500-1)	1620-1 463 (500-1)	1620-1½ 463 (500-1½)	1720-2 563 (600-2)

063° to RW06

MIRL Rwy 12-30 1

HIRL Rwy 6-24 1

REIL Rwy 12, 24 and 30 1