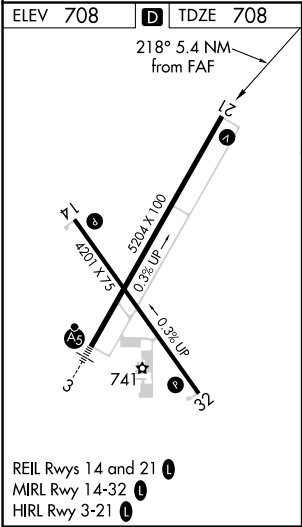
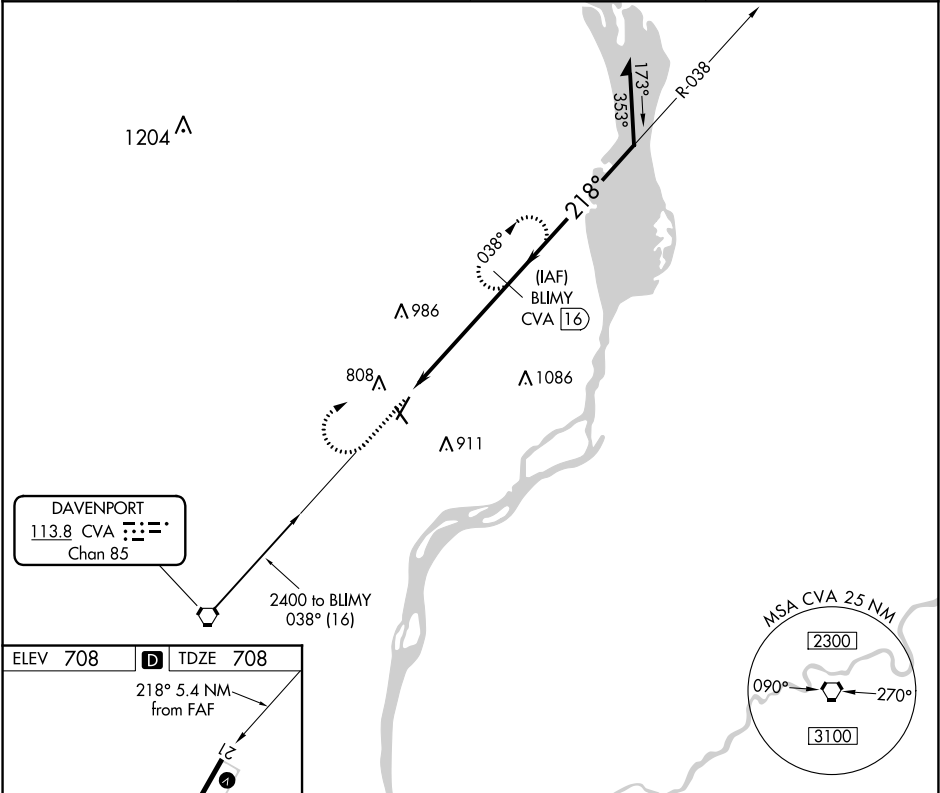


VORTAC CVA	APP CRS	Rwy Idg	5204
113.8	218°	TDZE	708
Chan 85		Apt Elev	708

VOR/DME RWY 21  
CLINTON MUNI (CWI)

-35°C/-31°F	Rwy 21 helicopter visibility reduction below ¾ SM NA.	MISSED APPROACH: Climb to 2400 then right turn via CVA R-038 to BLIMY 16 DME and hold.
-------------	---	--

AWOS-3PT 125.525	QUAD CITY APP CON ★ 125.95 257.8	CLNC DEL 118.5 0	UNICOM 122.8 (CTAF)
---------------------	-------------------------------------	---------------------	------------------------



2400	CVA R-038	BLIMY CVA 16	BLIMY CVA 16	Remain within 10 NM
VGSI and descent angles not coincident (VGSI Angle 3.00/TCH 34).				
CVA 10.6	2400	218°	2400	038°
2.89°	TCH 40	5.4 NM		
CATEGORY	A	B	C	D
S-21	1200-1	492 (500-1)	1200-1¼ 492 (500-1¼)	NA
CIRCLING	1200-1 492 (500-1)	1240-1 532 (600-1)	1240-1½ 532 (600-1½)	NA