

LOC/DME I-FNO 109.7 Chan 34	APP CRS 030°	Rwy Idg 5204 TDZE 700 Apt Elev 708
---	------------------------	---

ILS or LOC RWY 3
CLINTON MUNI (CWI)

⚠ When local altimeter setting not received, use Davenport altimeter setting and increase all DA 47 feet and all MDA 60 feet; increase S-LOC 3 Cat C visibility 1/2 mile and increase OLABE fix minimums S-LOC 3 Cat C visibility 1/2 mile.

⚠ -35°C/-31°F

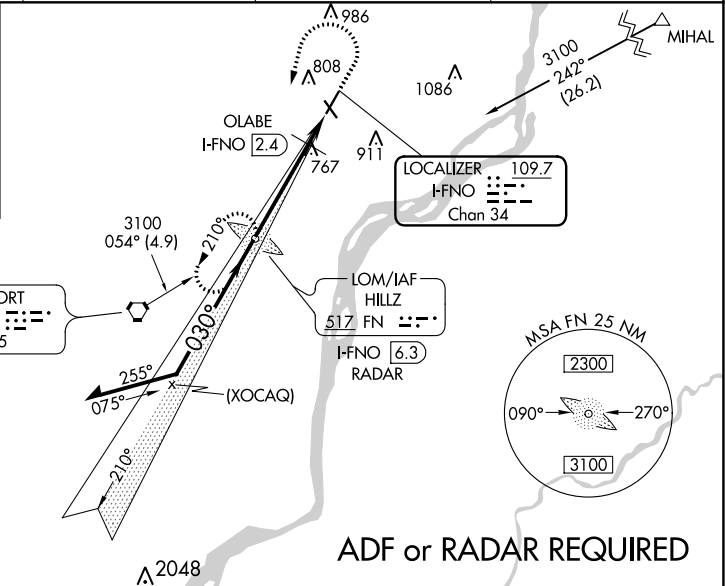
MALSR

MISSED APPROACH: Climb to 3100 then left turn direct HILLZ LOM/ I-FNO 6.3 DME/RADAR and hold.

AWOS-3PT 125.525	QUAD CITY APP CON * 125.95 257.8	CLNC DEL 118.5	UNICOM 122.8 (CTAF)
----------------------------	--	--------------------------	-------------------------------

ALTERNATE MISSED APCH FIX

DAVENPORT
CVA 113.8
Chan 85



*1180 when using Davenport altimeter setting.

Remain within 10 NM

GS 3.00° TCH 56

HILLZ LOM I-FNO 6.3 RADAR

OLABE I-FNO 2.4

*I-FNO 1.9 I-FNO 1.1

*1120

3.9 NM 0.5 0.8

*LOC only.

ELEV 708	TDZE 700
----------	----------

REIL Rwy 14 and 21
MIRL Rwy 14-32
HIRL Rwy 3-21

FAF to MAP 5.2 NM

Knots	60	90	120	150	180
Min:Sec	5:12	3:28	2:36	2:05	1:44

CATEGORY	A	B	C	D
S-ILS 3	900-1/2 200 (200-1/2)			NA
S-LOC 3	1120-1/2	420 (500-1/2)	1120-3/4 420 (500-3/4)	NA
CIRCLING	1140-1 432 (500-1)	1240-1 532 (600-1)	1240-1 532 (600-1 1/2)	NA
OLABE FIX MINIMUMS				
S-LOC 3	1020-1/2 320 (400-1/2)			NA
CIRCLING	1140-1 432 (500-1)	1240-1 532 (600-1)	1240-1 532 (600-1 1/2)	NA

NC-3, 03 DEC 2020 to 31 DEC 2020

NC-3, 03 DEC 2020 to 31 DEC 2020