

WAAS CH <b>45505</b> <b>W26A</b>	APP CRS <b>264°</b>	Rwy Idg TDZE <b>671</b> Apt Elev <b>672</b>
--	------------------------	---

RNAV (GPS) RWY 26

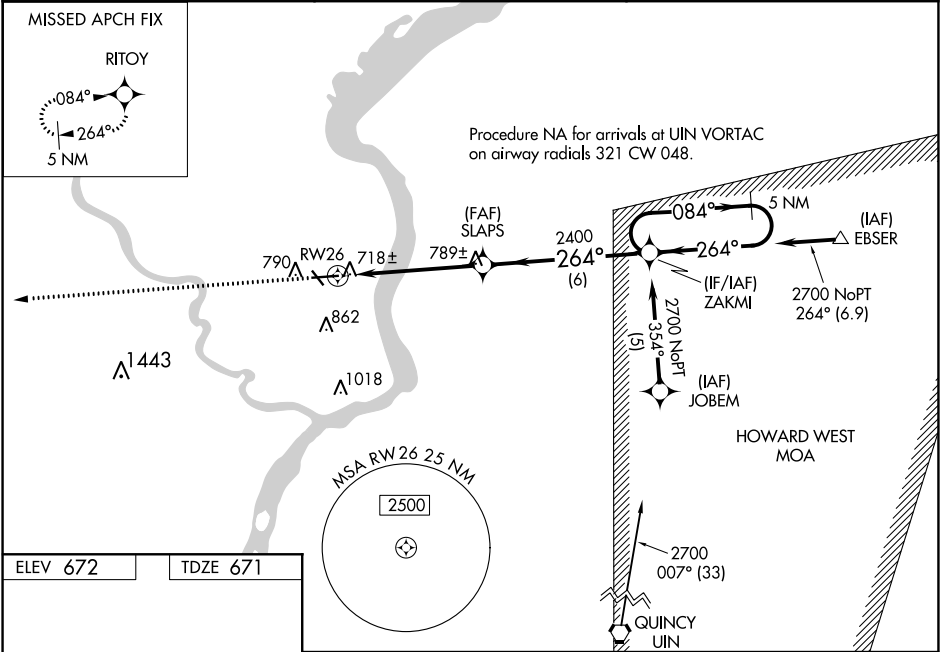
KEOKUK MUNI (EOK)

DME/DME RNP -0.3 NA. For uncompensated Baro-VNAV systems, LNAV/VNAV NA below -16°C (4°F) or above 54°C (130°F). When local altimeter setting not received, use Burlington altimeter setting and increase all DA 59 feet and all MDA 60 feet, increase Circling Cat C visibility ¼ mile. For inoperative MALS, increase LNAV/VNAV and LNAV Cat A/B/C visibility to 1 mile. For inoperative MALS when using Burlington altimeter, setting, increase LNAV Cat A/B visibility to 1 mile. VDP and Baro-VNAV NA when using Burlington altimeter setting. Circling to Rwy 32 NA at night.

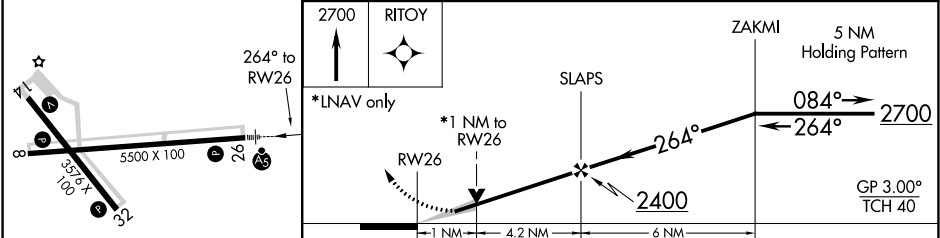
MALS

MISSED APPROACH:  
Climb to 2700 direct RITOY and hold.

AWOS-3 <b>118.375</b>	KANSAS CITY CENTER <b>126.225 317.775</b>	UNICOM <b>122.8 (CTAF) 0</b>
--------------------------	--	---------------------------------



ELEV 672	TDZE 671
----------	----------



CATEGORY	A	B	C	D
LPV DA	925-3 <sup>3</sup> / <sub>4</sub>	254 (300-3 <sup>3</sup> / <sub>4</sub> )		NA
LNAV/VNAV DA	979-3 <sup>3</sup> / <sub>4</sub>	308 (400-3 <sup>3</sup> / <sub>4</sub> )		NA
LNAV MDA	1040-3 <sup>3</sup> / <sub>4</sub>	369 (400-3 <sup>3</sup> / <sub>4</sub> )		NA
CIRCLING	1180-1	508 (600-1)	1220-1 <sup>1</sup> / <sub>2</sub> 548 (600-1 <sup>1</sup> / <sub>2</sub> )	NA