

LOC/DME I-BBJ	APP CRS	Rwy Idg	5500
110.9	264°	TDZE	671
Chan 46		Apt Elev	672

ILS or LOC/DME RWY 26

KEOKUK MUNI (EOK)

⚠

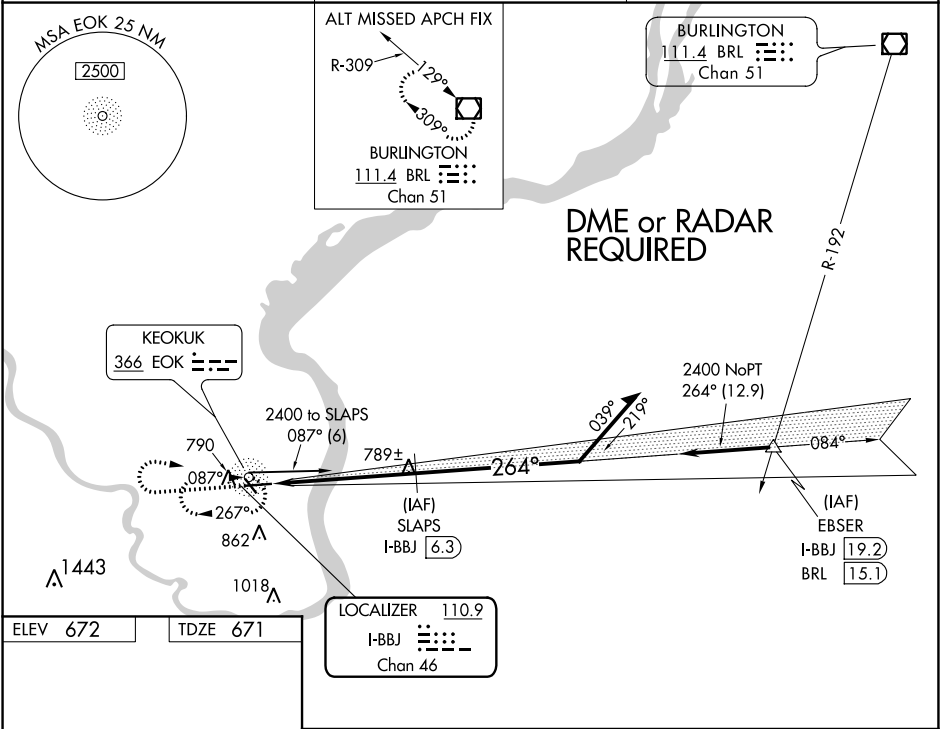
NA

ADF required. VDP NA when using Burlington altimeter setting. When VGSI inop, Circling rwy 32 NA at night. When local altimeter setting not received, use Burlington altimeter setting and increase DA to 930 feet and all MDA 60 feet. Increase S-LOC 26 and Circling Cat C visibility ¼ SM. Circling to Rwy 32 NA at night. For inop MALSR when using Burlington altimeter setting, increase S-ILS 26 Cats A/B/C visibility to 1 mile.

MALSR

MISSED APPROACH: Climb to 2600 then right turn direct EOK NDB and hold.

AWOS-3 118.375	KANSAS CITY CENTER 126.225 317.775	UNICOM 122.8 (CTAF) 0
-------------------	---------------------------------------	--------------------------



ELEV 672 TDZE 671

KEOKUK, IOWA
Orig-D 14SEP17

40°28'N-91°26'W

KEOKUK MUNI (EOK)
ILS or LOC/DME RWY 26